

TRINITY PUBLIC UTILITIES DISTRICT

AGENDA
SPECIAL MEETING OF THE BOARD
January 30,2024

5:30 p.m.

Redding Rancheria Trinity Health Center Community Room
81 Arbuckle Court
Weaverville, California

Join Zoom Meeting

<https://us02web.zoom.us/j/83790341810?pwd=bVpDSGR0SjZYTGdsczEvL0pCdllhUT09>

Meeting ID: 837 9034 1810

Passcode: 408463

Dial by your location

• +1 669 900 6833 US (San Jose)

Materials related to an item on this Agenda submitted to the Trinity Public Utilities District after distribution of the Agenda packet are available for public inspection in the District's office at 26 Ponderosa Lane, Weaverville, California during normal business hours. Members of the public may request materials related to this Agenda via e-mail at ssheetz@trinitypud.com.

In compliance with the Americans with Disabilities Act requests, individuals who require special accommodations to access and/or participate in District Board meetings please contact the District Office at 530-623-4564 at least 3 business days before the scheduled Board Meeting to ensure the District may assist you.

The Board may take action on any of the items listed on this Agenda regardless of whether the matter is described as an action item, a report, a communication, public input, or discussion item.

1. Call to Order:
2. Approval of the Agenda Order and Adoption of Additional Agenda Items if Necessary Pursuant to Government Code Section 54954.2(b).
3. Presentation and Public Hearing to Consider Rate Restructuring
4. Adjournment

**REPORT TO THE BOARD OF DIRECTORS
PUBLIC HEARING FOR FIRST READING AND CONSIDERATION OF
PROPOSED ORDINANCE 24-01 AMENDING RATE SCHEDULES NO. 1, 3, 5,
7, 8, 9, 10, 11, 17, 18, 19 AND 20 AND ADOPTION OF RESOLUTION 24-01
AMENDING THE SCHEDULE OF MISCELLANEOUS FEES AND CHARGES**

Issue:

Should the Trinity Public Utilities District (District) Board of Directors (Board) conduct a Public Hearing to consider Adoption of Ordinance 24-01, amending Rate Schedules No. 1, 3, 5, 7, 8, 9, 10, 11, 17, 18, 19 and 20?

Background and Discussion:

The Board, at its November 9, 2023 meeting, requested Staff consider implementation of a Wholesale Power Cost Adjustment to the applicable District Rate Schedules, in lieu of the Drought Relief Surcharge. Staff presented a Scenario at the December 14, 2023 meeting, at which time the Board requested an additional Scenario that would improve the negative Reserves projection in the Summary Budget Forecast. Staff presented two scenarios at the January 11, 2024 Board meeting. The Board conducted a Public Hearing, and following much discussion among the Board, directed Staff to proceed with the rate restructuring proposed in Scenario 2.

The Board requested that in addition to the Public Hearings on January 11, 2024 and February 8, 2024, that a Public Hearing be scheduled for an evening with electronic participation to allow for increased public participation. An additional Public Hearing is scheduled for January 30, 2024, at 5:30 p.m. at the Redding Rancheria Trinity Health Center Community Room.

The rationale for the rate restructuring is to provide more flexibility and increased transparency to the District in adjusting rates in alignment with fluctuations in the cost of wholesale power, which occur twice per year, rather than tying adjustments to the current once yearly Drought Relief Surcharge which is based on the amount of rainfall in the water year. The current Wholesale Power Charge is calculated at \$0.03440/kWh, and will be added to applicable rates. When the cost of wholesale power is adjusted, typically in April and October, the Wholesale Power Charge will also be re-calculated.

The cost of wholesale power is included in the District's existing rates, meaning, the base energy charge for all rates is being reduced, but the overall rate is increasing slightly to account for inflationary driven budget deficits and increased wholesale power costs. The System Access Charge is also being increased. The proposed Rate Schedules are attached.

Staff also took this opportunity to modify Rate Schedule No. 10, Public Benefits Discount to remove the association with Rate Schedule No. 16, Project Agreement No. 1, which was rescinded after Trinity County completed payments on the Hospital loan; to amend Rate Schedule No. 17, removing the expired solar incentive and increasing the Administrative Charge for net metering to \$20.00 per

meter; and to amend the Schedule of Miscellaneous Fees and Charges for improved transparency and alignment with new rates.

Fiscal Analysis:

The proposed rate restructuring will allow the District to meet increasing operating and capital expenses as well as unfunded State mandates. The restructuring will also permit the District to charge the customers the current cost of power utilizing the Wholesale Power Cost Charge versus the time delay of the Drought Relief Surcharge.

Alternatives:

The Board has the option to:

1. Conduct a Public Hearing to receive input regarding proposed Ordinance Number 24-01 Amending Rate Schedules No. 1, 3, 5, 7, 8, 9, 10, 11, 17, 18, 19 and 20, as presented.
2. Decline to Conduct a Public Hearing at this time.

Conclusions and Recommendations:

The proposed rate restructuring is the result of a several months long process, which included discussions of the Board, as well as opportunities for public participation. The proposed restructuring is necessary for the District to remain financially solvent. Staff recommends that the Board conduct a Public Hearing to receive input on proposed Ordinance 24-01 Amending Rate Schedules No. 1, 3, 5, 7, 8, 9, 10, 11, 17, 18, 19 and 20, and Adoption of Resolution 24-01, Amending the Schedule of Miscellaneous Fees and Charges as presented.


Paul Hauser

Dated: 1/22/2024

Trinity PUD

Rate Discussion

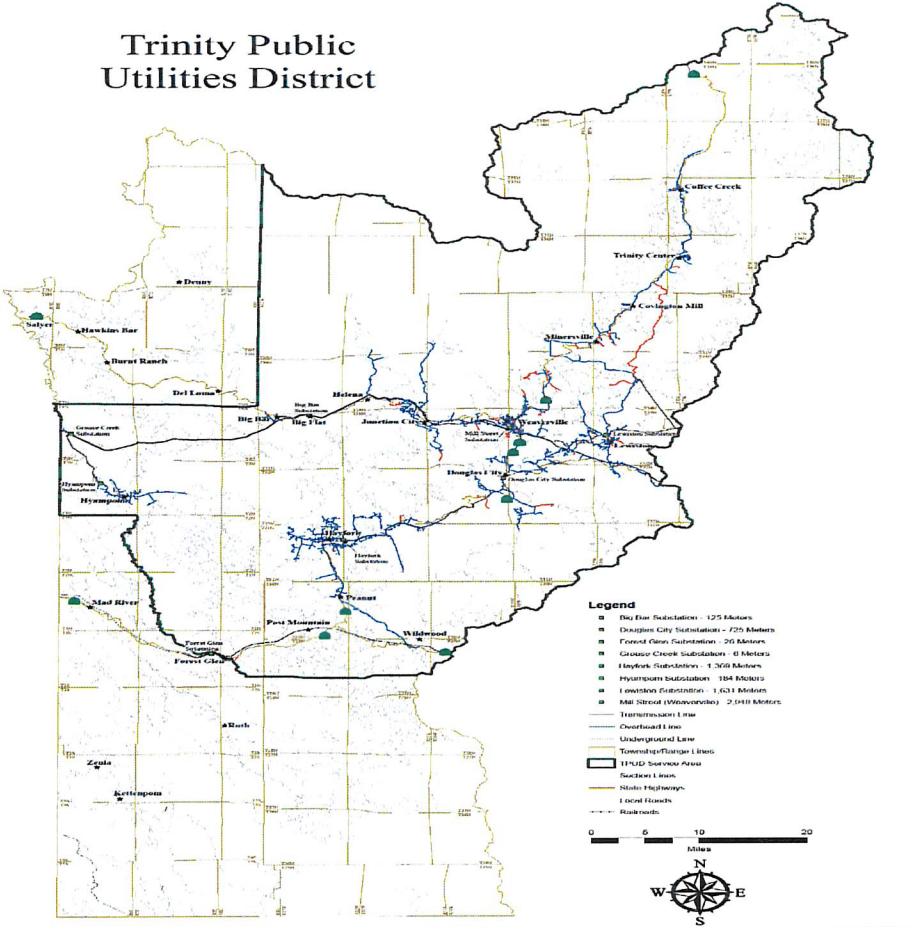
Background

- TPUD began delivering power to Weaverville in 1982 taking advantage of the 1955 Trinity River Division Act that set aside 25% of the power generated from Trinity River water for “the use of the citizens of Trinity County”
- TPUD has a “first preference” right to purchase power from the Western Area Power Administration (WAPA)
- TPUD’s first preference power satisfies California’s renewable power mandate under SB100
- In 1993 TPUD purchased powerline and substation assets from PG&E allowing the PUD to provide power to the areas outside of Weaverville expanding to the current service area.

Additional Background

- Today TPUD has 25 employees that provide electric service to 7,298 customers located over a 2,200 square mile service territory
- The PUD has 9 substations and more than 700 miles of power lines
- 94% of the power is delivered over WAPA and TPUD transmission lines with the remaining 6% delivered from PG&E transmission lines
- All of the power is renewable, emission free hydropower from the Central Valley Project

Trinity Public Utilities District



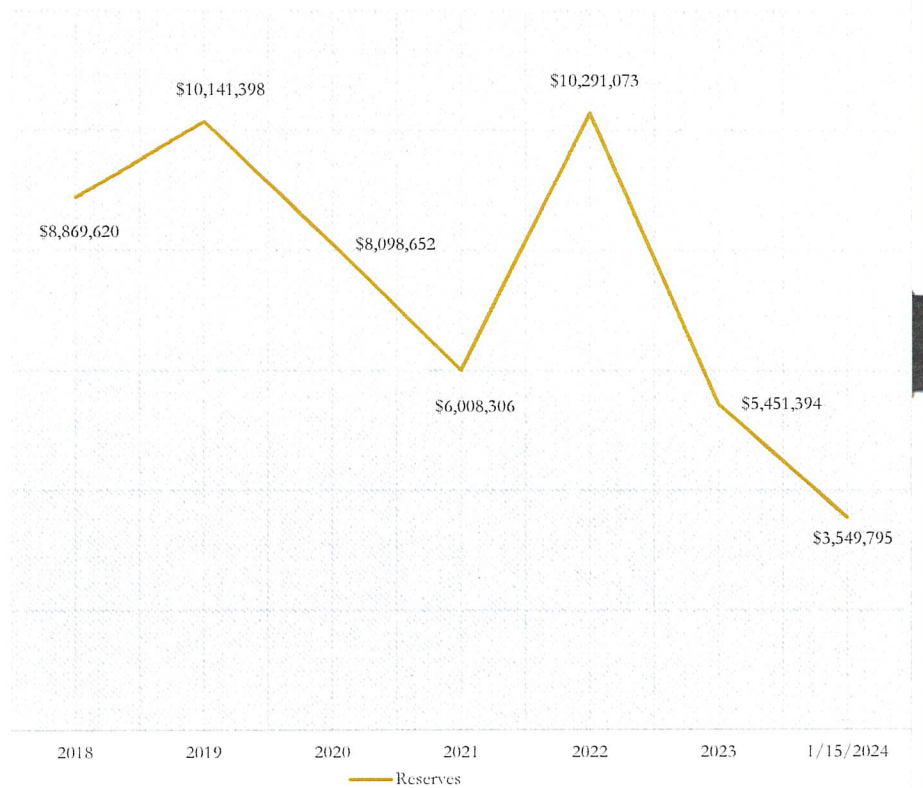
- Legend**
- Red Hill Substation - 125 Meters
 - Douglas City Substation - 725 Meters
 - Forest Glen Substation - 26 Meters
 - Grassy Creek Substation - 6 Meters
 - Haystack Substation - 1,362 Meters
 - Hyattsville Substation - 184 Meters
 - Jewettown Substation - 1,631 Meters
 - Mill Street (Winnemucca) - 2,048 Meters
 - Transmission Line
 - - - Overhead Line
 - Underground Line
 - ▭ Township/Range Lines
 - ▭ HFD Service Area
 - ▭ Section Lines
 - State Highways
 - Local Roads
 - Railroads



Decline in Reserves

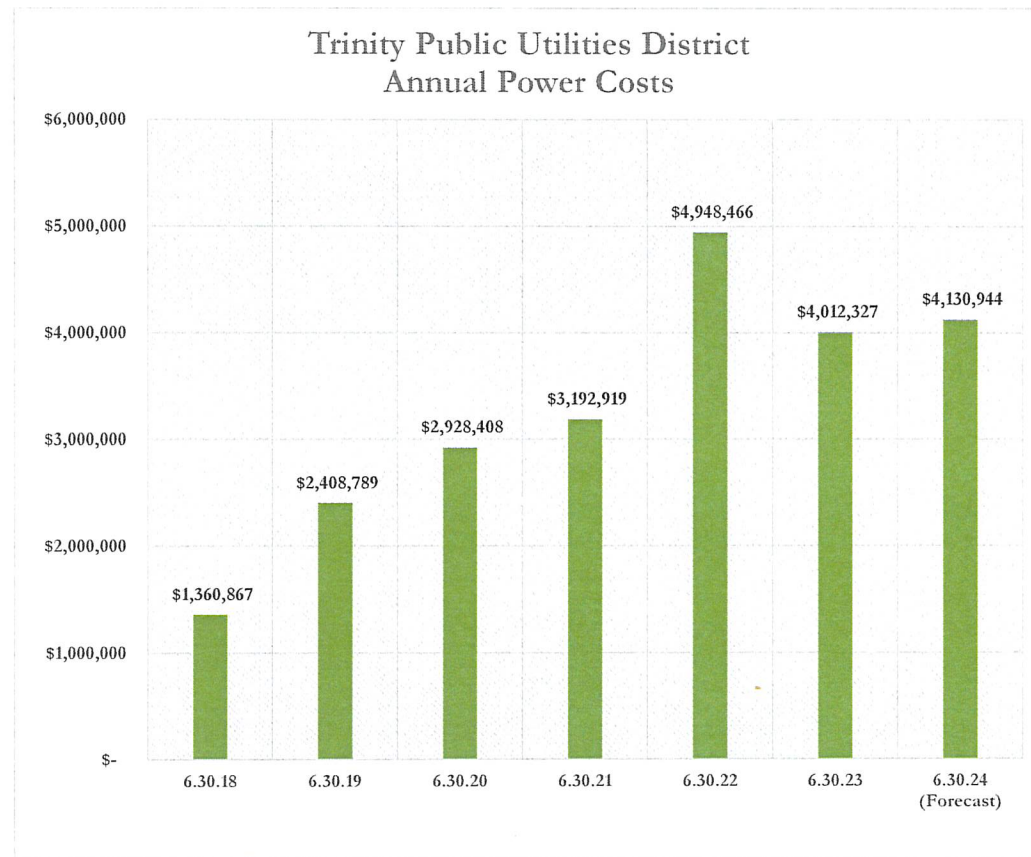
- Reserves began to decline in 2019 as capital expenditures increased
- Power costs have also increased during this time period
- Increased cost for vegetation management (SB 247 mandated a 40% increase in tree trimmer wages)
- ROW Expansion Project
- Capital Investments to upgrade the system to Serve New Load - \$15 million to date
- The District borrowed \$9.0 million at the end of 2021 to fund the upgrades to the system
- Helena Fire settlement resulted in a loss of wildfire liability insurance
- Without a rate increase TPUD would run out of money in 2025

Trinity Public Utilities District
History of Reserves



Increase in Power Cost

- Pervasive drought dramatically increases power cost
- Increased water releases to the Trinity River (versus diversions to the Sacramento River) both increase power cost and reduce power available
- Inflation has increased the cost to operate the hydro power plants and maintain the high voltage transmission system



Capital Expenditures

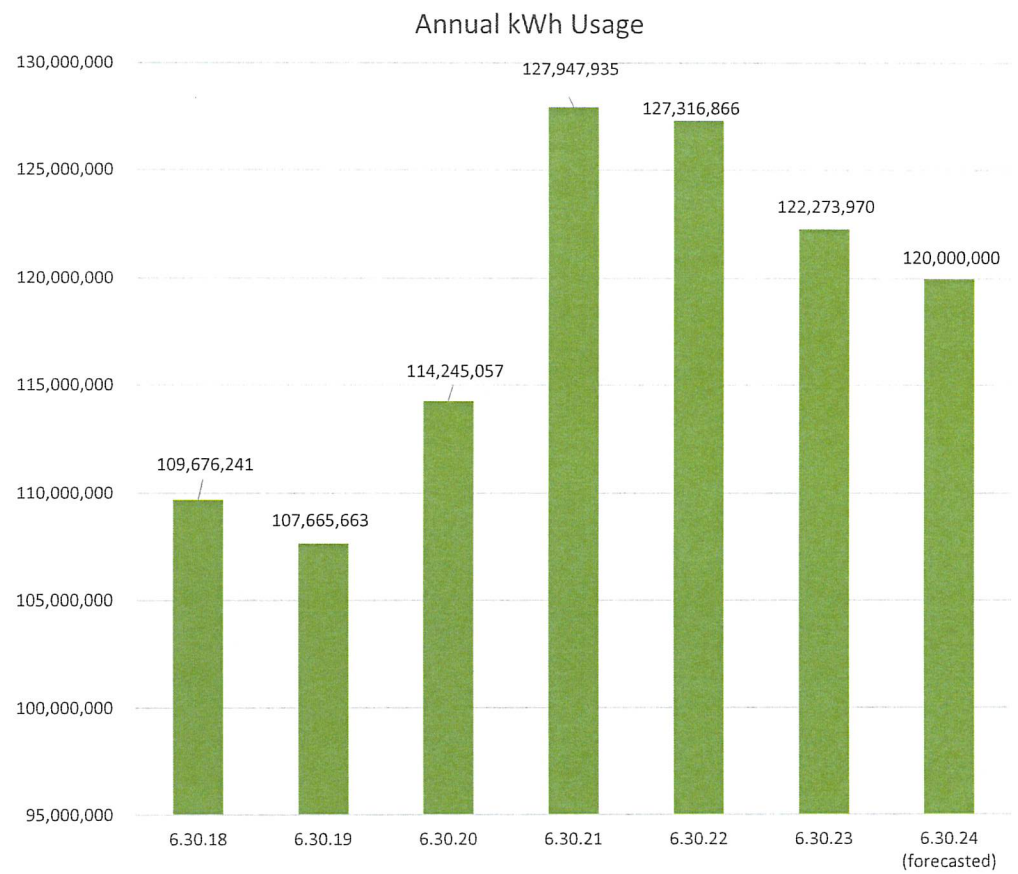
- Significant capital expenditures to serve new load – over \$15 million spent to date.
- Significant increase in pole replacements as a result of California Wildfire Legislation (AB 1054 in July 2019)
- ROW Expansion – approx. \$4.0 million spent

Trinity Public Utilities District
Annual Capital Expenditures



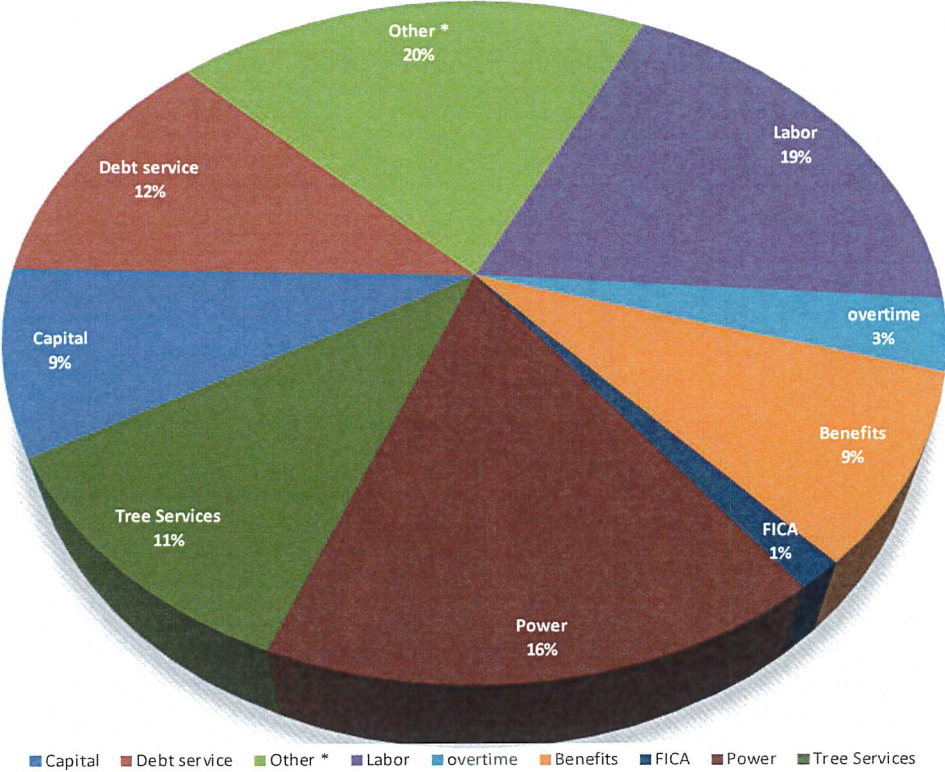
Decrease in Power Sales

- TPUD has lost load since 2021
- All of the load loss is in the High Impact and Commercial categories
- Residential load has increased slightly

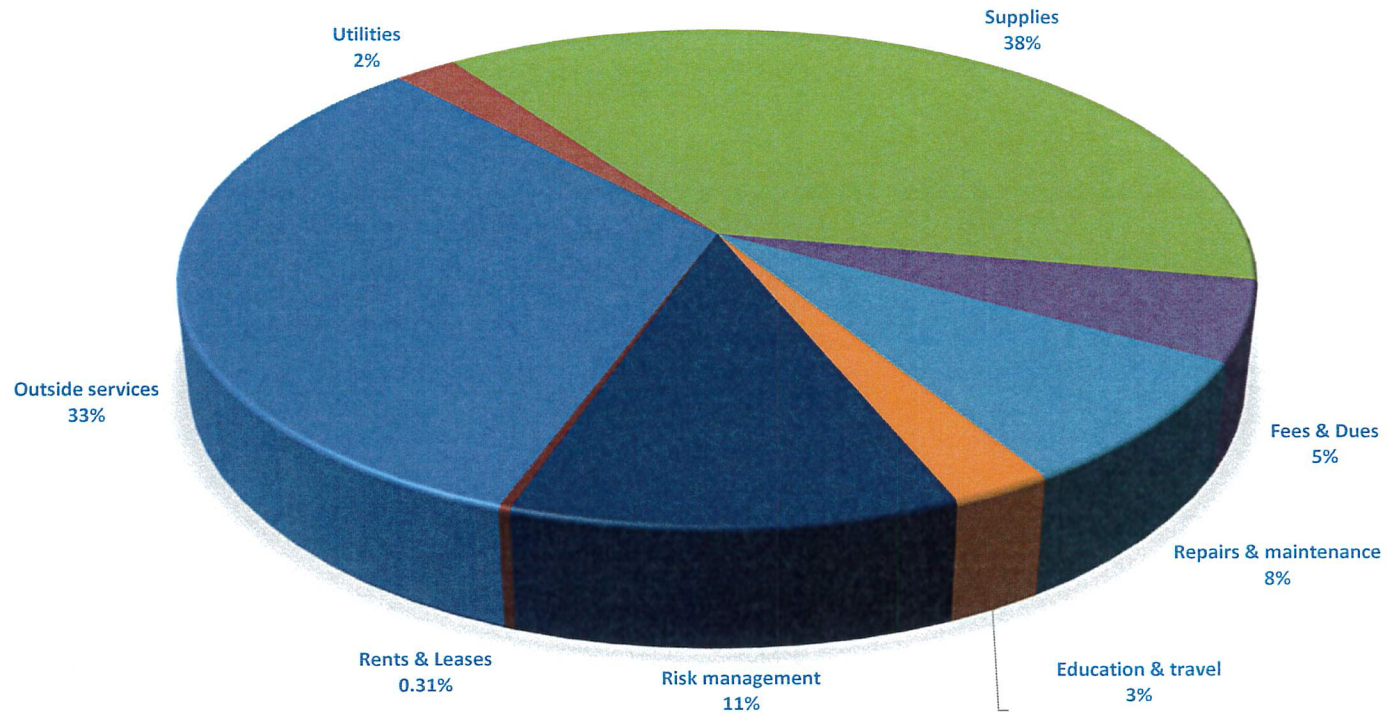


Costs by Activities

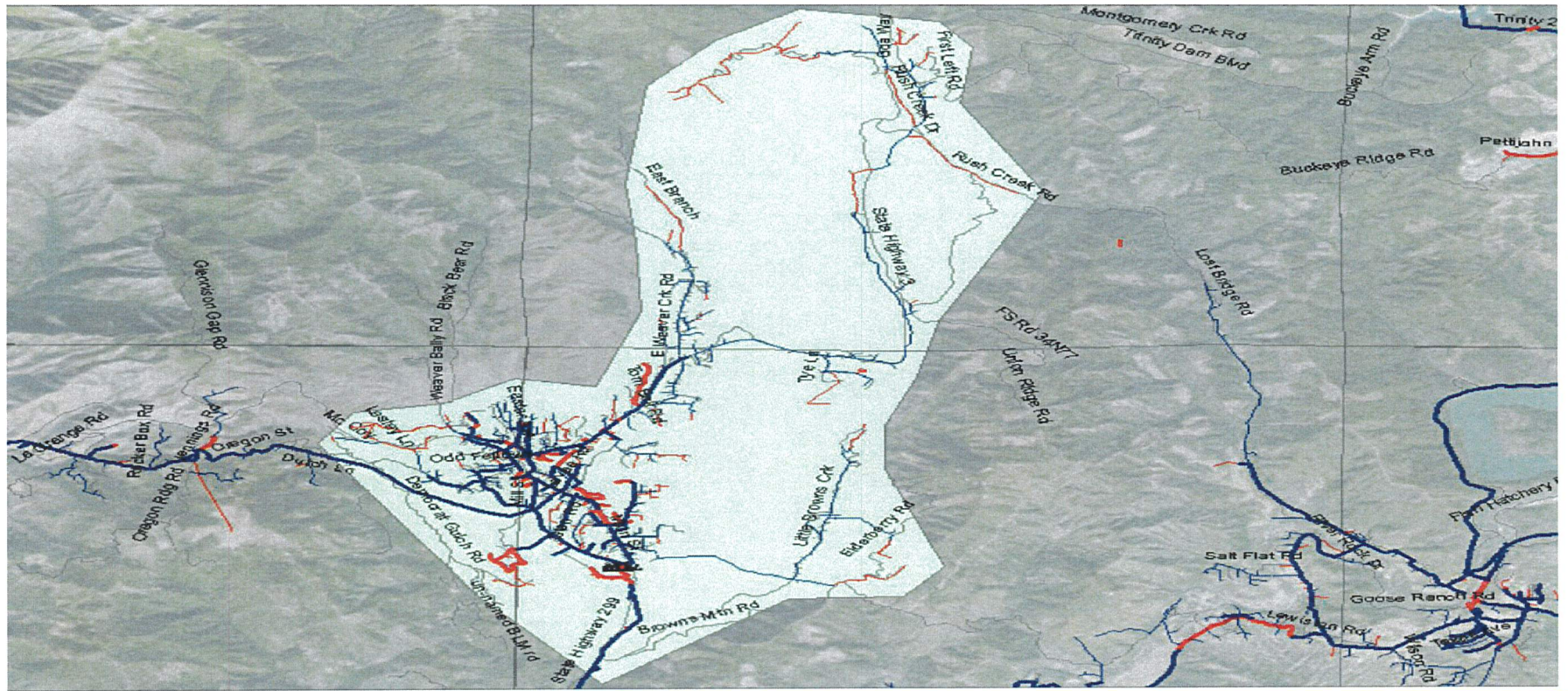
FY 23/24 Budget



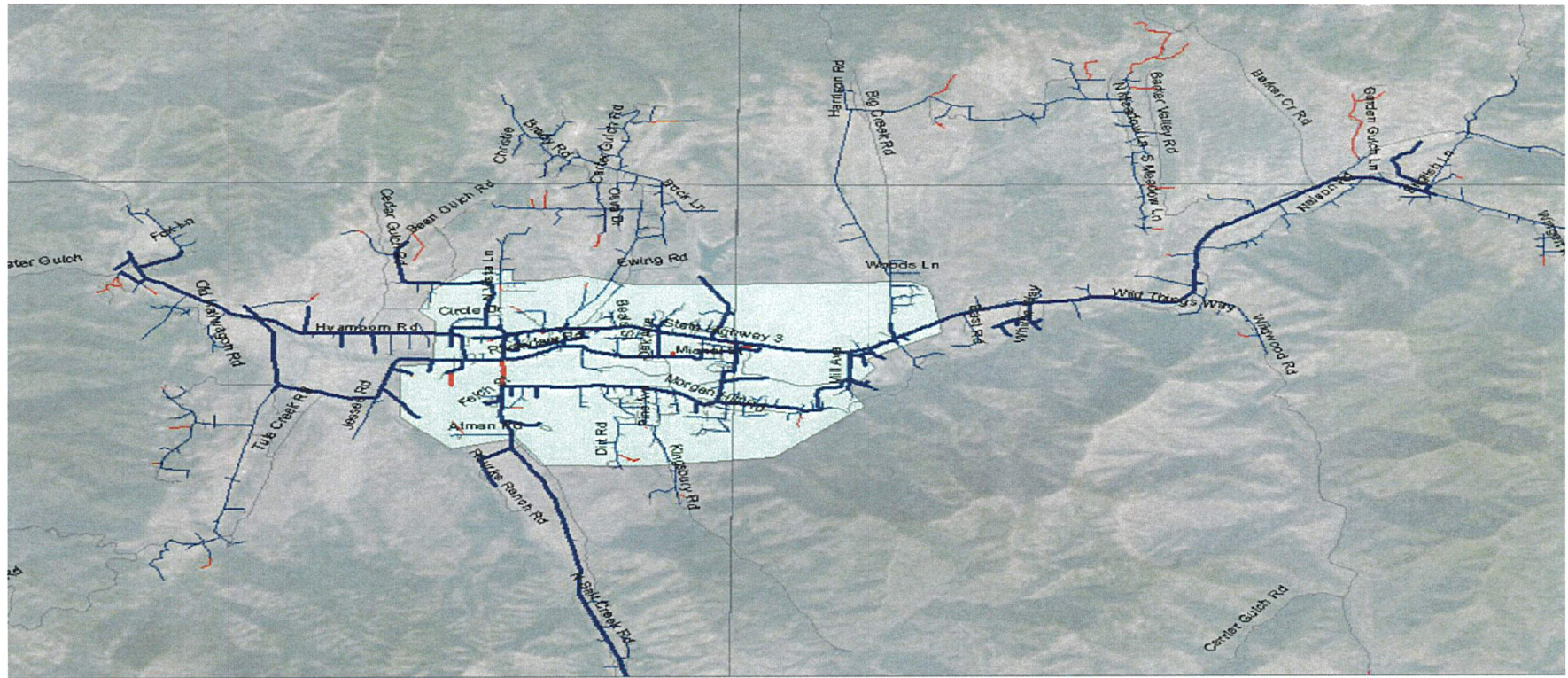
OTHER ACTIVITIES*
FY 23/24 Budget



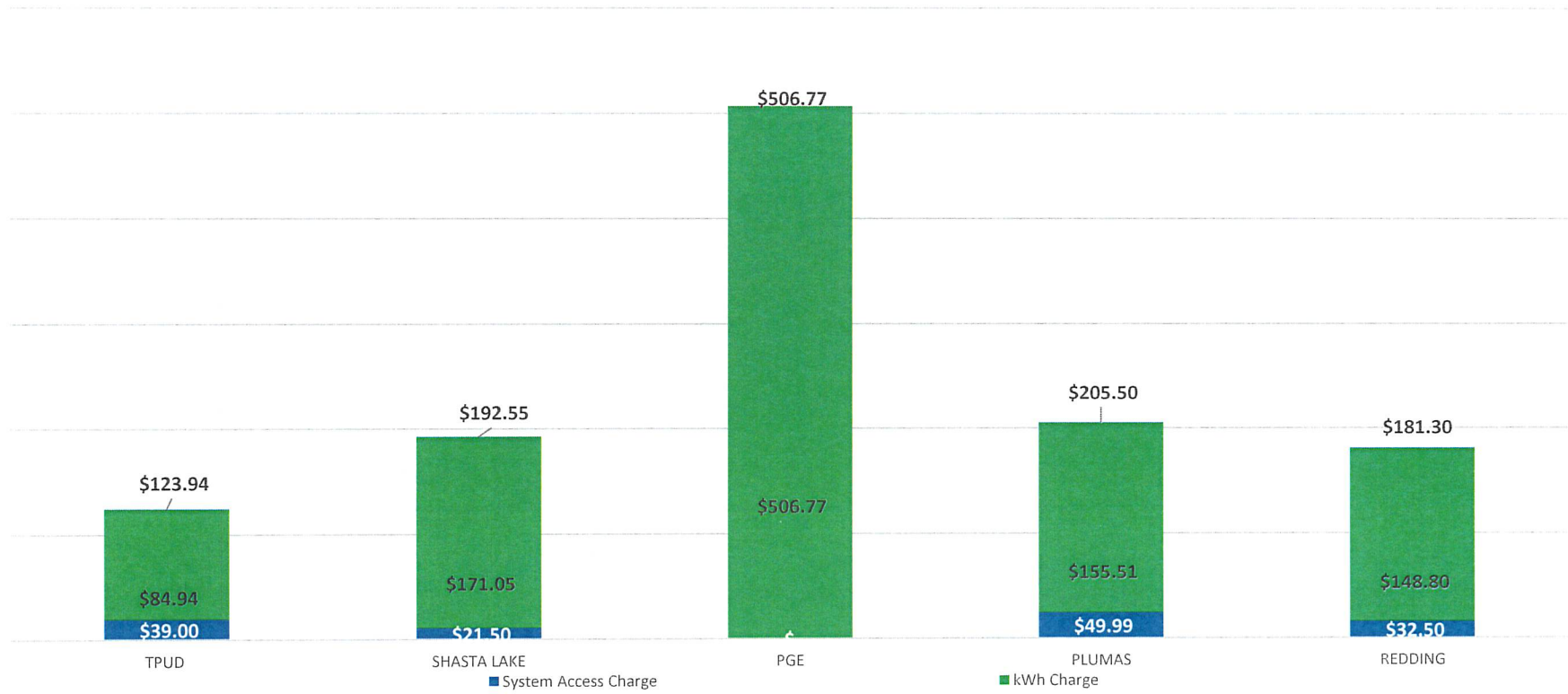
Weaverville Geographic Zone A



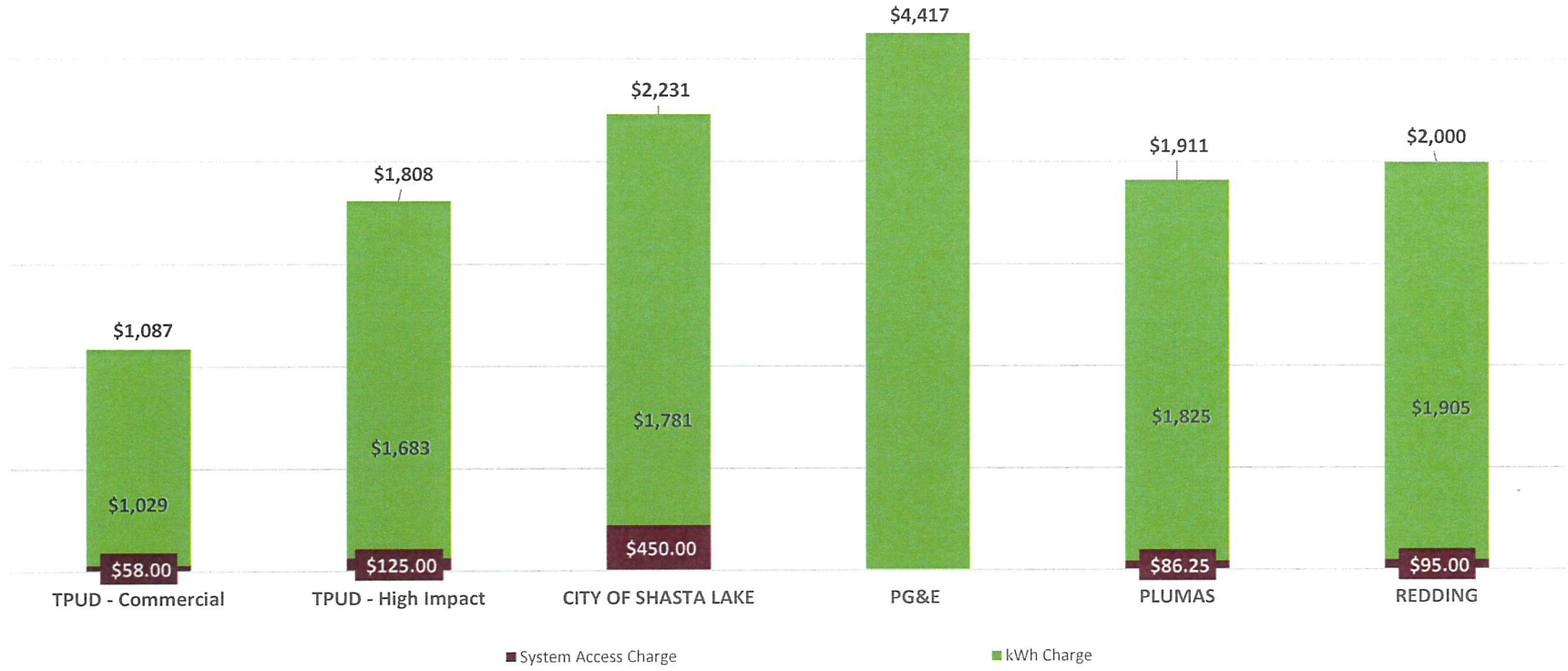
Hayfork Geographic Zone A



Residential Bill Comparison 1,000 kWh



Commercial Bill Comparison 10,000 kWh



Proposed Change in Rates

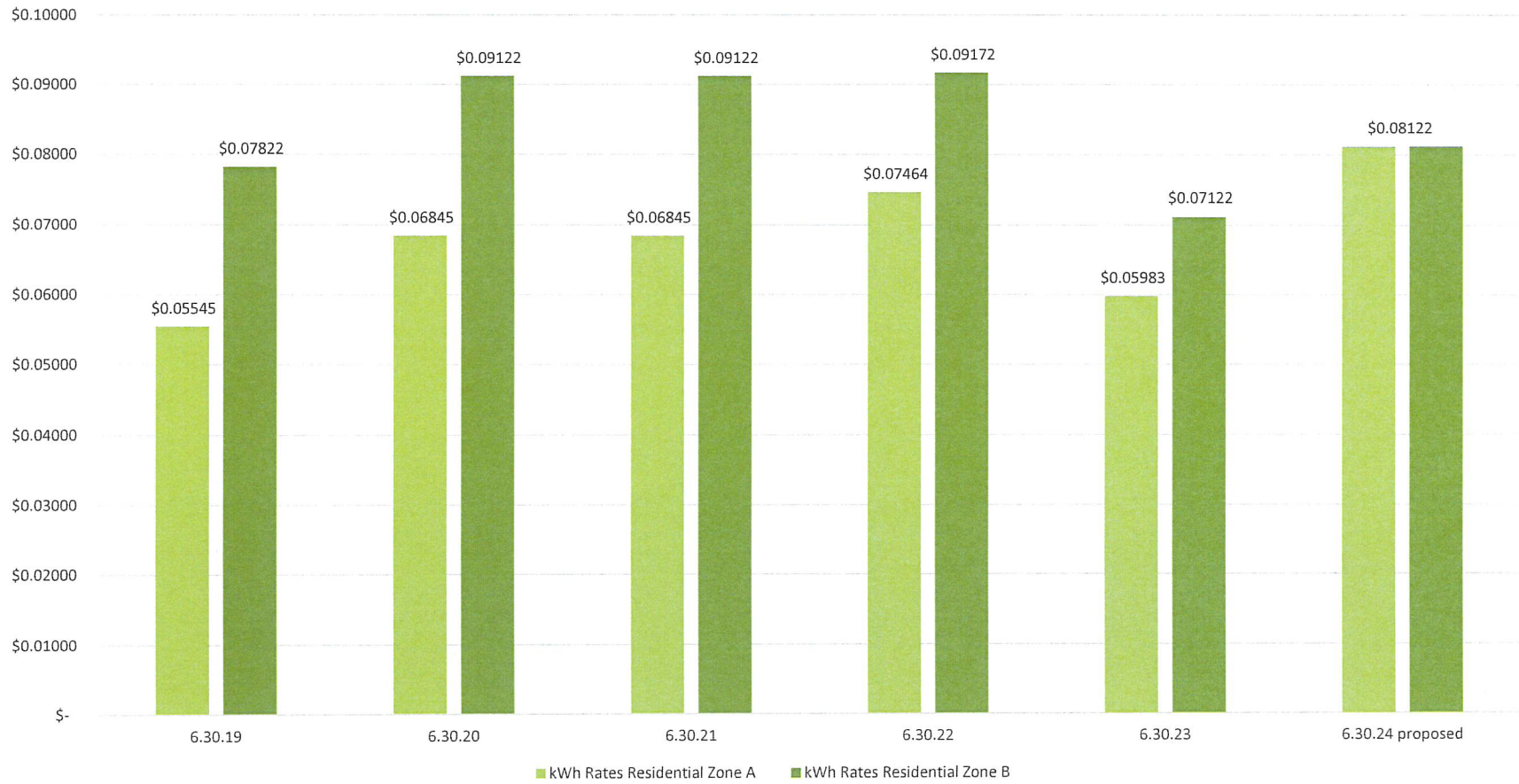
Current Rates

Restructured Rates

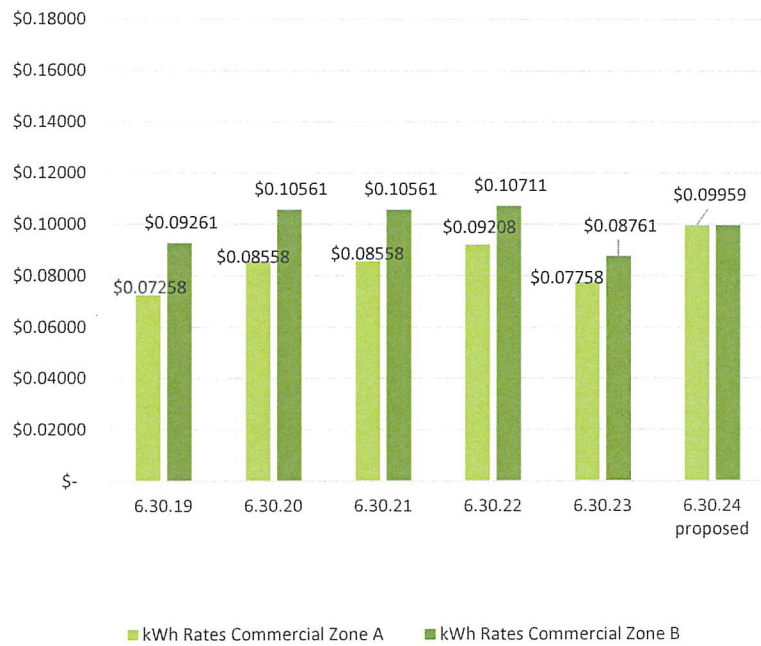
METHOD 1 - RATES									0.0285
	INPUT:	FLAT	PUBLIC BENEFITS CHARGE ON FLAT	BASE RATE	DROUGHT RELIEF SURCHARGE	CALIFORNIA ENERGY TAX RATE	PUBLIC BENEFITS CHARGE	FINAL BILL	
	KWH USED	CHARGE	CHARGE						
Residential - Weaverville	1000	\$ 31.00	\$ 0.88	\$0.05983	\$0.00000	0.00030	\$1.7100	\$93.72	
Residential - Other	1000	\$ 31.00	\$ 0.88	\$0.07122	\$0.00000	0.00030	\$2.0300	\$105.43	
Commercial - Weaverville	3500	\$ 46.50	\$ 1.33	\$0.07758	\$0.00000	0.00030	\$7.7400	\$328.15	
Commercial - Other	3500	\$ 46.50	\$ 1.33	\$0.08761	\$0.00000	0.00030	\$8.7400	\$364.26	
High Impact Load - WV	10000	\$ 82.50	\$ 2.35	\$0.11656	\$0.00000	0.00030	\$33.2200	\$1,286.67	
High Impact Load - Other	10000	\$ 82.50	\$ 2.35	\$0.12857	\$0.00000	0.00030	\$36.6400	\$1,410.19	

METHOD 1 - RATES									0.0285		
	INPUT:	FLAT	PUBLIC BENEFITS CHARGE ON FLAT	BASE RATE	WHOLESALE POWER COST RATE	CALIFORNIA ENERGY TAX RATE	PUBLIC BENEFITS CHARGE	FINAL BILL	\$\$\$ Increase	%% Increase	
	KWH USED	CHARGE	CHARGE								
Residential - Weaverville	1000	\$ 39.00	\$ 1.11	\$0.04682	\$0.03440	0.00030	\$2.3100	\$123.94	\$30.22	32%	
Residential - Other	1000	\$ 39.00	\$ 1.11	\$0.04682	\$0.03440	0.00030	\$2.3100	\$123.94	\$18.51	18%	
Commercial - Weaverville	3500	\$ 58.00	\$ 1.65	\$0.06519	\$0.03440	0.00030	\$9.9300	\$419.20	\$91.05	28%	
Commercial - Other	3500	\$ 58.00	\$ 1.65	\$0.06519	\$0.03440	0.00030	\$9.9300	\$419.20	\$54.94	15%	
High Impact Load - WV	10000	\$ 125.00	\$ 3.56	\$0.12860	\$0.03440	0.00030	\$46.4600	\$1,808.02	\$521.35	41%	
High Impact Load - Other	10000	\$ 125.00	\$ 3.56	\$0.12860	\$0.03440	0.00030	\$46.4600	\$1,808.02	\$397.83	28%	

History of Residential kWh Rates



History of Commercial kWh Rates



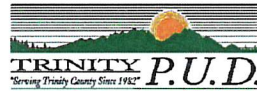
History of High Impact Rates



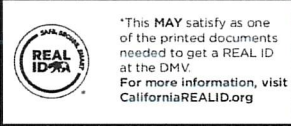
Residential Bill Changes

		Zone A		Zone B	
		CURRENT BILL	PROPOSED BILL	CURRENT BILL	PROPOSED BILL
<u>kWh USAGE</u>					
500	kWh	\$ 62.81	\$ 82.03	\$ 68.66	\$ 82.03
1000	kWh	\$ 93.72	\$ 123.94	\$ 105.43	\$ 123.94
1500	kWh	\$ 124.64	\$ 165.86	\$ 142.21	\$ 165.86

NNNN



TRINITY P.U.D.
P.O. BOX 1410
WEAVERVILLE, CA 96093



*This MAY satisfy as one of the printed documents needed to get a REAL ID at the DMV. For more information, visit CaliforniaREALID.org

Billing Questions:
(530) 623-5536

4 468

TRINITY PUD CUSTOMER
ADDRESS 1
ADDRESS 2



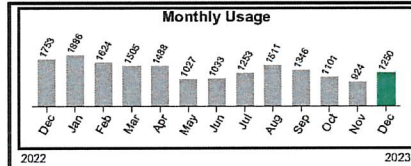
Account Number TEST Page 1 of 2

Billing Summary	
Balance From Last Billing	\$89.02
Payment Received - Thank You 12/16/23	\$(89.02)
Previous Balance	\$0.00
Current Charges(MAP LOCATION)	\$143.92
Amount Due	\$143.92

Statement Date December, 2023
Current Charges Due Date 01/17/2024

Location TEST LOCATION

Meter	From	Through	Days	Type	End Read	Start Read	Mult	Usage	Est
TEST - A	Nov 10, 2023	Dec 10, 2023	30	KWH	97370	96120	1	1250	No



Detail of Charges

System Access Charge	\$39.00
Kwh Charge @ \$0.04682 per kwh	\$58.52
Wholesale Power Charge @ \$0.0344 per kwh	\$43.00
California Energy Tax @ \$0.00030 per kwh	\$0.38
Cal Public Benefit Charge @ 2.85%	\$3.02
Total This Service	\$143.92

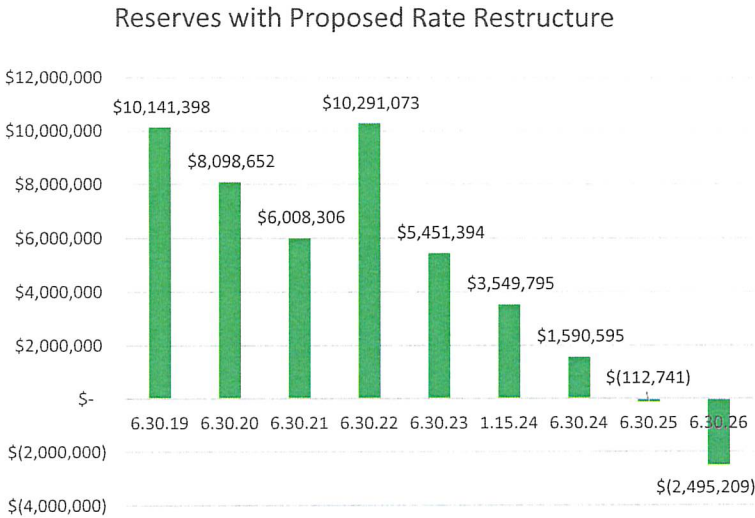
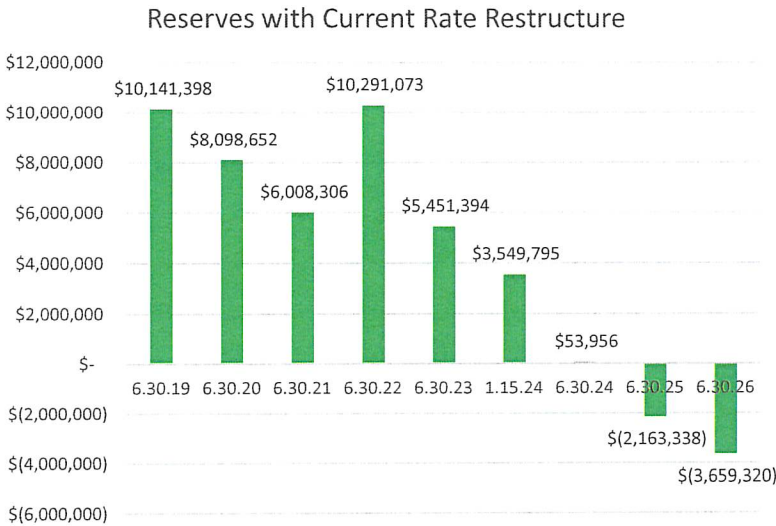
Avg. Daily Energy Cost: \$4.79 Avg. Daily Usage: 42

This Month	Last Year
Usage 1753	Days Served 31

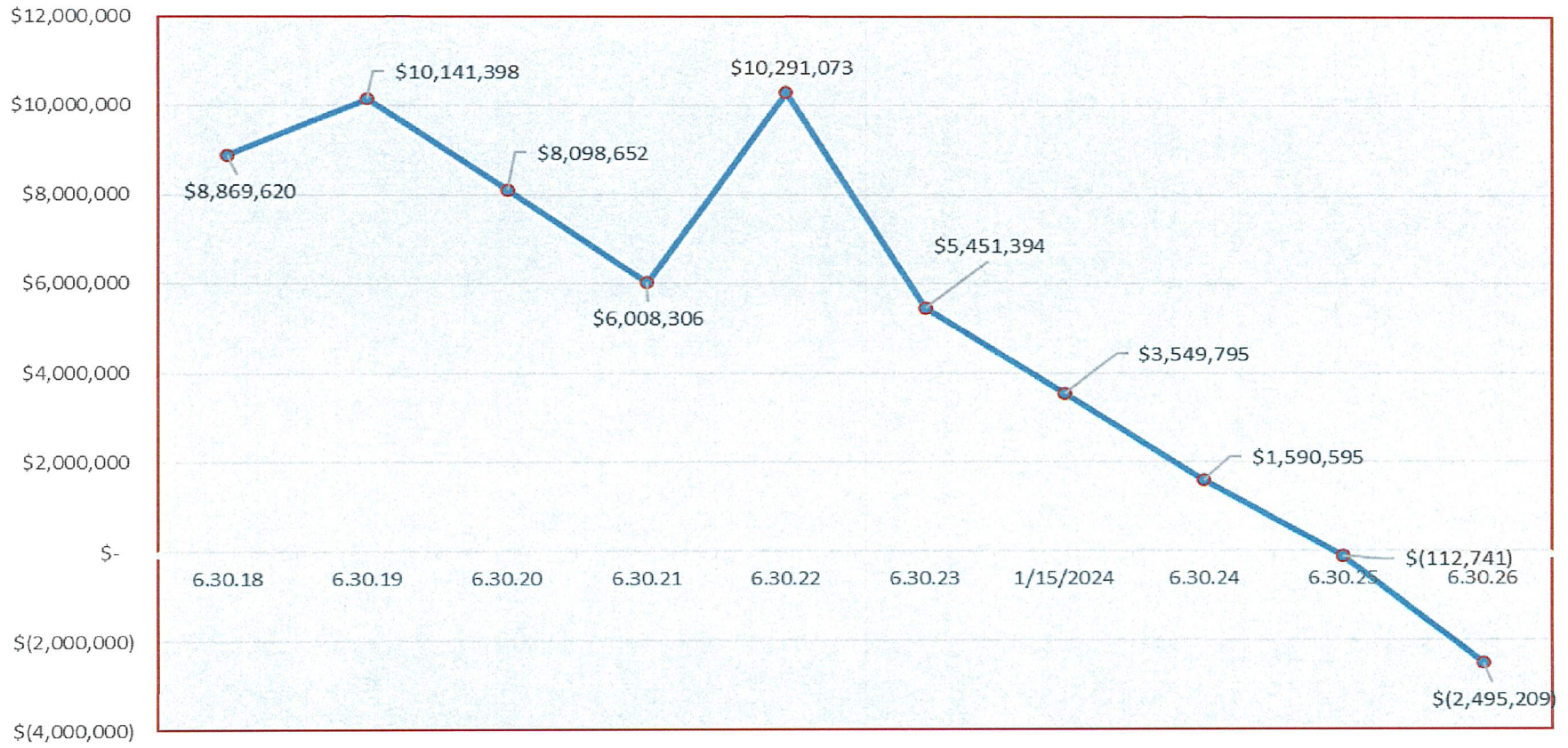
Messages

Have a Merry Christmas and Happy New Year from all of us at Trinity PUD
THIS STATEMENT REFLECTS PAYMENTS RECEIVED THROUGH 12/20/2023.

Reserves Comparison



Historical and Forecasted Reserves with Proposed Rate Changes



Questions?

Questions?

- Comments can be shared at ssheetz@trinitypud.com
- Comments or questions can be shared at 623-4564

**TRINITY PUBLIC UTILITIES DISTRICT
ORDINANCE NO. 24-01**

**AN ORDINANCE CHANGING ELECTRIC RATES FOR
TRINITY PUBLIC UTILITIES DISTRICT CUSTOMERS**

BE IT ENACTED BY THE BOARD OF DIRECTORS OF THE TRINITY PUBLIC UTILITIES DISTRICT:

SECTION 1. For each customer of the District the rate(s) for all electrical services billed on the monthly billings issued immediately following the meter readings on or around February 10, 2024, and all billings thereafter, shall be the rates established by Ordinance 24-01 adopted by this Board on February 8, 2024.

SECTION 2. This Ordinance approves the following Rate Schedules all dated February 8, 2024. Rates Schedules included are:

- Schedule 1 Residential Service
- Schedule 3 Primary General Service/Commercial Service
- Schedule 5 Industrial/Large Power Service
- Schedule 7 Outdoor Area Lighting Service
- Schedule 8 Street and Highway Lighting
- Schedule 9 Agricultural Pumping Service
- Schedule 10 Pubic Benefit Discount
- Schedule 11 Unmetered Service
- Schedule 17 Renewable Electric Generating Facility Net Metering
- Schedule 18 Wholesale Power Charge
- Schedule 19 State of California Service
- Schedule 20 High Impact Load Service

All previously adopted Rate Schedules listed in Section 2 are hereby rescinded.

PASSED AND ADOPTED on the 8th day of February, 2024, by the Board of Directors of the Trinity Public Utilities District, State of California, by the following vote:

Ayes:
Noes:
Absent:
Abstain:

Michael Rourke, President

Attest: _____
Andrew Johnson, Clerk

CLERK'S CERTIFICATE

I, Andrew Johnson, Clerk of the Trinity Public Utilities District, hereby certify that the foregoing is a full and correct copy of Ordinance 24-01, duly adopted at a regular meeting of the Board of Directors of said District, duly held at the noticed meeting place on February 8, 2024, at which all of the members of the Board of Directors had due notice and at which a majority thereof were present; and that at said meeting, said Resolution was adopted by the following vote:

Ayes:

Noes:

Absent:

Abstain:

I further certify that I have carefully compared the same with the original minutes of said meeting on file and of record in my office; that the foregoing Ordinance is a full, true and correct copy of the original Ordinance adopted at said meeting and entered in said minutes; and that said Ordinance has not been amended, modified, or rescinded since the date of its adoption, and the same is in full force and effect.

Witness my hand at the Trinity Public Utilities District, this 8th day of February, 2024.

Andrew Johnson,
Clerk of the Trinity
Public Utilities District

**PRIMARY
RESIDENTIAL SERVICE-A**

APPLICABILITY

This schedule is applicable to single-phase and polyphase residential service in single-family dwellings and in flats and apartments separately metered by the District; to single-phase and polyphase service in common areas in a multifamily complex; ~~to a second single-phase service to a single-family residential premise for service to domestic water pumping and unattached outbuildings and barns~~; to residential single-phase and polyphase service supplied to a mobile home park or residential RV Park through one meter on a single premise and submetered to all individual tenants. Residential service shall not be applicable to or available for new three-phase service after December 1, 1995, resale for profit, standby or auxiliary service, service to any single motor exceeding a nameplate rating of ten (10) horsepower, or any equipment which will cause excessive voltage fluctuations.

Any Residential service that uses more than 9,999 kWh in any given month will be reclassified to Rate Schedule 20, High Impact Load Service. For the purpose of determining monthly usage all electric meters on a parcel shall have their energy usage aggregated and treated as a single meter. However, the System Access Charge shall apply to all meters separately. Once reclassified, and after twelve (12) consecutive months with usage below 10,000 kWh, the owner may petition the District’s General Manager for reclassification back to Rate Schedule 1. Residential services that service a common area in a multifamily complex, or a service supplying power to a mobile home park or residential RV Park through one meter will be exempt from reclassification to Rate Schedule 3 or Rate Schedule 20.

MONTHLY RATE

EFFECTIVE DATE	GEOGRAPHIC ZONE A		GEOGRAPHIC ZONE B	
	SYSTEM ACCESS CHARGE	ENERGY CHARGE – kWh	SYSTEM ACCESS CHARGE	ENERGY CHARGE - kWh
2/11/2022	27.50	0.05764	27.50	0.07472
2/11/2023	31.00	0.05983	31.00	0.07122
2/11/2024	34.50 39.00	0.0620 0.04682	34.50 39.00	0.0677 0.04682
2/11/2025	38.00	0.06422	38.00	0.06422

GEOGRAPHIC ZONES

Customers within the geographic boundaries of the District that existed on June 30, 1993, and in the geographic boundaries of the Hayfork Valley P.U.D. that existed on June 30, 1993 are classified customers within the Geographic Zone A, all other customers are classified as within the Geographic Zone B. The geographic boundaries shall be determined by records kept by the County Clerk.

~~DROUGHT RELIEF SURCHARGE~~WHOLESALE POWER CHARGE

To the charges computed under the above rate, including any adjustments, shall be added applicable ~~Drought Relief~~Wholesale Power Charge surcharges pursuant to Rate Schedule No. 18, ~~Drought Relief Surcharge~~Wholesale Power Charge.

TAX CLAUSE

To the charges computed under the above rate, including any adjustments, shall be added the applicable proportionate part of any taxes or governmental impositions which are, or may in the future be, assessed on the basis of gross revenues of the District and/or the price or revenue from the electric energy or service sold and/or the volume of energy generated or purchased for sale and/or sold hereunder. As of the date this rate was approved, two such assessments existed: (1) the specified per kWh tax established by the California Energy Commission; and, (2) a 2.85% of revenue “Public Benefit” ~~surcharge~~ on total revenue

~~from power sold.~~

GUARANTEED PAYMENTS

When a customer agrees pursuant to the District Line Extension Policy, to guarantee certain payments, such payments may supersede the rates established herein.

TERMS AND CONDITIONS

1. The District shall not be liable for any damages, direct, consequential, or any other, if this rate is terminated or the provisions thereof changed by action of the Board of the District or any regulatory agency, state or federal, or by action of any court.
2. The rates stated herein are subject to such changes as may be authorized by the Board of Directors of the District from time to time.

AVAILABILITY

Throughout the entire District's service area where the facilities of the District are available of adequate capacity and reasonably accessible to the customer service panel.

Date Effective: February 11, ~~2022~~2024
Date Approved: ~~January 13, 2022~~February 8, 2024
~~Resolution-Ordinance~~ No.: ~~22-02~~224-01

Michael Rourke, President

**PRIMARY
GENERAL SERVICE/COMMERCIAL SERVICE-A**

APPLICABILITY

This schedule applies to single-phase and polyphase alternating current service for electric loads that do not exceed 1000 KVA, and to any other electric service that is not applicable to another rate schedule.

January of each year all meters in Rate Schedule 3 will be reviewed to determine the System Access Charge for the current year. All new commercial accounts will receive the higher System Access Charge until the following year's review.

This service is not available for resale, standby or auxiliary service, or service to any equipment, which will cause excessive voltage fluctuation.

The owner of a service that has been reclassified from Rate Schedule 3, Commercial Service, to Rate Schedule 20, High Impact Service, due to usage higher than 9,999 kWh in any given month may petition the District's General Manager for reclassification back to Rate Schedule 3 after twelve (12) consecutive months with usage below 10,000kWh.

MONTHLY RATE

EFFECTIVE DATE	GEOGRAPHIC ZONE A		GEOGRAPHIC ZONE B	
	SYSTEM ACCESS CHARGE*	ENERGY CHARGE – kWh	SYSTEM ACCESS CHARGE*	ENERGY CHARGE - kWh
2/11/2022	\$41.25	\$0.07508	\$41.25	\$0.09011
2/11/2023	\$46.50	\$0.07758	\$46.50	\$0.08761
2/11/2024	\$51.75 \$58.00	\$0.08008 \$0.06519	\$51.75 \$58.00	\$0.08511 \$0.06519
2/11/2025	\$57.00	\$0.08259	\$57.00	\$0.08259

*A discount of 25% will be applied to the System Access Charge for single-phase accounts utilizing less than 1,000 kWh per month in accordance with Paragraph 2 above.

POWER FACTOR

If an electric load routinely falls below a power factor of 75% then the customer shall pay, in addition to the charges above, a power factor charge equal to the sum of the following:

- \$10 per month, plus
- the Energy charge above times a percent corresponding to the average power factor (computed from the average kW and the average kvar) as follows:

Power Factor	Percent Increase	Power Factor	Percent Increase	Power Factor	Percent Increase	Power Factor	Percent Increase
75%	5.3%	57%	12.1%	39%	25.0%	21%	60.2%
74%	5.6%	56%	12.6%	38%	26.1%	20%	64.0%
73%	5.9%	55%	13.1%	37%	27.2%	19%	68.2%
72%	6.2%	54%	13.6%	36%	28.4%	18%	72.9%
71%	6.5%	53%	14.2%	35%	29.7%	17%	78.1%
70%	6.9%	52%	14.8%	34%	31.1%	16%	84.0%
69%	7.2%	51%	15.4%	33%	32.5%	15%	90.7%
68%	7.5%	50%	16.0%	32%	34.0%	14%	98.3%
67%	7.9%	49%	16.7%	31%	35.6%	13%	107.1%
66%	8.2%	48%	17.3%	30%	37.3%	12%	117.3%

65%	8.6%	47%	18.0%	29%	39.2%	11%	129.5%
64%	9.0%	46%	18.8%	28%	41.1%	10%	144.0%
63%	9.4%	45%	19.6%	27%	43.3%	9%	161.8%
62%	9.8%	44%	20.4%	26%	45.5%	8%	184.0%
61%	10.2%	43%	21.2%	25%	48.0%	7%	212.6%
60%	10.7%	42%	22.1%	24%	50.7%	6%	250.7%
59%	11.1%	41%	23.0%	23%	53.6%	5%	304.0%
58%	11.6%	40%	24.0%	22%	56.7%		

Services subject to a Power Factor charge shall be required to pay the District's costs to install and maintain the metering or to otherwise collect sufficient data on the amount of reactive power consumed to determine the amount of reactive power consumed.

If the reactive power consumed as a result of, and during the operation of, a generator delivering real power to the District's system then the reactive power will be free of charges from the District. In the event of such generator operation for a partial month, the District shall use historical averages to estimate the amount of reactive power consumed when the generator was not delivering real power to the District's system.

GEOGRAPHIC ZONES

Customers within the geographic boundaries of the District that existed on June 30, 1993, and in the geographic boundaries of the Hayfork Valley P.U.D. that existed on June 30, 1993 are classified customers within the Geographic Zone A, all other customers are classified as within Geographic Zone B. The geographic boundaries shall be determined by records kept by the County Clerk.

DROUGHT-RELIEF SURCHARGE/WHOLESALE POWER CHARGE

To the charges computed under the above rate, including any adjustments, shall be added applicable ~~Drought-Relief/Wholesale Power Charge surcharges~~ pursuant to Rate Schedule No. 18, ~~Drought-Relief Surcharge/Wholesale Power Charge.~~

TAX CLAUSE

To the charges computed under the above rate, including any adjustments, shall be added the applicable proportionate part of any taxes or governmental impositions which are, or may in the future be, assessed on the basis of gross revenues of the District and/or the price or revenue from the electric energy or service sold and/or the volume of energy generated or purchased for sale and/or sold hereunder. As of the date this rate was approved, two such assessments existed: (1) the specified per kWh tax established by the California Energy Commission, and (2) a 2.85% of revenue "Public Benefit" ~~surcharge, on total revenue from power sold.~~

GUARANTEED PAYMENTS

When a customer agrees pursuant to the District Line Extension Policy, to guarantee certain payments, such payments may supersede the rates established herein.

TERMS AND CONDITIONS

1. The District shall not be liable for any damages, direct, consequential, or any other, if this rate is terminated or the provisions thereof changed by action of the Board of the District or any regulatory agency, state or federal, or by action of any court.
2. The rates stated herein are subject to such changes as may be authorized by the Board of Directors of the District from time to time.

AVAILABILITY

Throughout the entire District service area where the facilities of the District are available of adequate capacity, and reasonably accessible to the customer service panel.

Date Effective: February 11, ~~2022~~2024
Date Approved: ~~January 13, 2022~~February 8, 2024
~~Resolution-Ordinance~~ No.: 22-0224-01

Michael Rourke, President

INDUSTRIAL / LARGE POWER SERVICE

APPLICABILITY

This schedule applies to single-phase and polyphase alternating current service for electric loads that exceed 1000 KVA at one meter location or have a non-coincident demand above 1,000 KVA through multiple meters at adjacent service locations. This service is not available for resale, standby or auxiliary service, or service to any equipment which will cause excessive voltage fluctuation.

ENERGY CHARGE

EFFECTIVE DATE	ENERGY CHARGE – kWh
2/11/2022	\$0.04915
2/11/2023	\$0.04988
2/11/2024	\$0.05061 0.0543
2/11/2025	\$0.05133

DEMAND CHARGE

\$3.51 per/kW

DETERMINATION OF BILLING DEMAND

The billing demand shall be the maximum average kilowatt load used by the customer for any period of fifteen consecutive minutes during the billing month for which the bill is rendered.

POWER FACTOR

The customer agrees to maintain the unity power factor as nearly as practicable. Service will not be provided to any load with a power factor of less than 50%. The power factor may be measured at any time. Should such measurement indicate that the power factor is less than 90% lagging, the District will notify the customer and request that the customer implement corrective measures. If in the sole opinion of the District the power factor will continue to routinely fall below 90%, the District will implement the following power factor charge:

Power Factor	Charge (\$ per kW)	Power Factor	Charge (\$ per kW)	Power Factor	Charge (\$ per kW)
90%	0.40	76%	1.32	62%	2.27
89%	0.46	75%	1.38	61%	2.34
88%	0.53	74%	1.44	60%	2.41
87%	0.60	73%	1.51	59%	2.48
86%	0.55	72%	1.58	58%	2.55
85%	0.73	71%	1.65	57%	2.62
84%	0.79	70%	1.72	56%	2.69
83%	0.86	69%	1.79	55%	2.75
82%	0.92	68%	1.86	54%	2.82
81%	0.99	67%	1.93	53%	2.89
80%	1.05	66%	2.00	52%	2.96
79%	1.12	65%	2.06	51%	3.03
78%	1.18	64%	2.13	50%	3.10
77%	1.25	63%	2.20		

The calculated power factor used to determine the charge above shall be the arithmetic mean of the measured monthly average power factor and the measured monthly on-peak power factor rounded to the nearest whole percent.

The measured on-peak power factor is the power factor measured during the maximum peak demand for

each billing period. In the event of multiple occurrences of the same peak demand, the lowest associated power factor will be used. The measured average power factor will be the average power factor for the billing period.

DROUGHT RELIEF SURCHARGE WHOLESAL POWER CHARGE

To the charges computed under the above rate, including any adjustments, shall be added applicable ~~Drought Relief surcharges~~Wholesale Power Charges pursuant to Rate Schedule No. 18, ~~Drought Relief Surcharge~~Wholesale Power Charge.

TAX CLAUSE

To the charges computed under the above rate, including any adjustments, shall be added the applicable proportionate part of any taxes or governmental impositions which are, or may in the future be, assessed on the basis of gross revenues of the District and/or the price or revenue from the electric energy or service sold and/or the volume of energy generated or purchased for sale and/or sold hereunder. As of the date this rate was approved, two such assessments existed: (1) the specified per kWh tax established by the California Energy Commission; and (2) a 2.85% of revenue "Public Benefit" ~~surcharge, on total revenue from power sold.~~

GUARANTEED PAYMENTS

When a customer agrees pursuant to the District Line Extension Policy, to guarantee certain payments, such payments may supersede the rates established herein.

TERMS AND CONDITIONS

1. The District shall not be liable for any damages, direct, consequential, or any other, if this rate is terminated or the provisions thereof changed by action of the Board of the District or any regulatory agency, state or federal, or by action of any court.
2. The rates stated herein are subject to such changes as may be authorized by the Board of Directors of the District from time to time.

AVAILABILITY

Throughout the entire District service area where the facilities of the District are available of adequate capacity, and reasonably accessible to the customer service panel.

Date Effective: February 11, ~~2022~~2024
Date Approved: ~~January 13, 2022~~February 8, 2024
~~Resolution-Ordinance~~ No.: ~~-22-0224-01~~

Michael Rourke, President

OUTDOOR AREA LIGHTING SERVICE

APPLICABILITY

This schedule is applicable to service outdoor area lighting customers for the illumination of areas where street and highway lighting schedules are not applicable and where the District installs, owns, operates and maintains the complete lighting installation on the District's existing wood distribution poles or on customer-owned poles acceptable to the District installed by the customer on his private property.

RATES

Lamp Size – Rate is Per Lamp/Per Month	Effective 2/11/2022	Effective 2/11/2023	Effective 2/11/2024	Effective 2/11/2025
Mercury Vapor (no longer available for new installations)				
175 watts	\$11.04	\$11.57	\$12.10 <u>15.06</u>	\$12.61
400 watts	\$21.81	\$22.85	\$23.89 <u>30.65</u>	\$24.92
High Pressure Sodium Vapor Flood Light or equivalent Luminaire Fixture (no longer available for new installations)				
100/3700 watts/lumens	\$9.14	\$9.58	\$10.02 <u>11.71</u>	<u>\$10.44</u>
200/9500 watts/lumens	\$14.54	\$15.23	\$15.92 <u>19.30</u>	<u>\$16.62</u>
High Pressure Sodium Vapor or equivalent Luminaire Fixture Lamp (no longer available for new installations)				
70/2300 watts/lumens	\$7.35	\$7.70	\$8.05 <u>9.23</u>	<u>\$8.40</u>
100/3700 watts/lumens	\$8.58	\$8.99	\$9.40 <u>11.09</u>	<u>\$9.80</u>
150/6300 watts/lumens	\$11.33	\$11.87	\$12.41 <u>14.95</u>	<u>\$12.95</u>
200/9500 watts/lumens	\$12.67	\$13.27	\$13.87 <u>17.25</u>	<u>\$14.48</u>
LED Lights				
<u>60/5400 watts/lumens</u>			<u>14.50</u>	
<u>105/9450 watts/lumens</u>			<u>17.25</u>	
<u>300/27000 watts/lumens</u>			<u>55.89</u>	

SPECIAL CONDITIONS

1. Service will normally be supplied to individually controlled lamps from the District's existing 120/240-volt (120/208-volt star in certain localities) single-phase overhead or underground distribution circuits. Service from 480-volt sources will be made available only when this type of service is deemed to be practical from the District's engineering standpoint and the applicant pays the additional initial cost of a 480-volt supply.
2. Lighting service will be supplied from dusk to dawn on an operating schedule of approximately 4,100 hours per year.
3. Outdoor area lighting facilities will only be installed where the District has, or intends to install, a wood distribution pole for the purpose of supporting other distribution facilities, or where a customer-owned pole acceptable to the District has been installed by the customer on his private

- property. The District shall not be required to install luminaries at locations where, in its judgement, the service may be objectionable to others.
4. The charges, pursuant to the District's Line Extension Policy, to connect the light to the District's system shall be advanced to the District by the customer prior to installation of the facilities.
 5. (a) Lighting facilities installed hereunder, will be relocated, modified, or removed at the customer's request at the expense of the customer.
 - (b) Lighting facilities installed hereunder will be relocated or modified to comply with governmental requirements, or because of an irreconcilable objection to the facilities by others, at the expense of the District.
 6. ACCESS: All lighting facilities installed hereunder must be accessible to the District's vehicles for installation and maintenance.
 7. MAINTENANCE: Except in the case of emergency, maintenance of lamps and equipment will be performed only during normal working hours within a reasonable period following notification by the customer of the need for such maintenance.
 8. CONTRACT: A written contract in form on file with the District will be required for service under this schedule for a period not less than three years. If the lighting facilities installed hereunder are made idle or are removed before expiration of the initial term of the effective contract, the customer shall pay to the district the cost of the installation plus the estimated cost of removal, less the estimated salvage value of the facilities removed.

~~DROUGHT RELIEF SURCHARGE~~

~~To the charges computed under the above rate, including any adjustments, shall be added applicable Drought Relief surcharges pursuant to Rate Schedule No. 18, Drought Relief Surcharge.~~

TAX CLAUSE

To the charges computed under the above rate, including any adjustments, shall be added the applicable proportionate part of any taxes or governmental impositions which are, or may in the future be, assessed on the basis of gross revenues of the District and/or the price or revenue from the electric energy or service sold and/or the volume of energy generated or purchased for sale and/or sold hereunder. As of the date this rate was approved, two such assessments existed: (1) the specified per kWh tax established by the California Energy Commission; and (2) a 2.85% of revenue "Public Benefit" ~~surcharge, on total revenue from power sold.~~

For the purpose of determining monthly energy consumption the size of the light in watts shall be multiplied by 341.

TERMS AND CONDITIONS

1. The District shall not be liable for any damages, direct, consequential, or any other, if this rate is terminated or the provisions thereof changed by action of the Board of the District or any regulatory agency, state or federal, or by action of any court.
2. The rates stated herein are subject to such changes as may be authorized by the Board of Directors of the District from time to time.

AVAILABILITY

Throughout the entire District service area where the facilities of the District are available of adequate capacity.

Date Effective: February 11, ~~2022~~2024
Date Approved: ~~January 13, 2022~~February 8, 2024
~~Resolution~~Ordinance No.: 22-0224-01

Michael Rourke, President

STREET AND HIGHWAY LIGHTING

APPLICABILITY

This schedule is applicable to service furnished to governmental or other public lighting authorities and supplied from overhead and underground distribution lines to street, highway, and other public outdoor lighting installations, where the Utility District owns and maintains the entire equipment.

RATES

Lamp Size (Rate is per lamp/per month)	Effective 2/11/2022	Effective 2/11/2023	Effective 2/11/2024	Effective 2/11/2025
Mercury-Vapor (no longer available for new installations)				
175 watts Mercury-Vapor	\$11.59	\$12.14	\$12.69 <u>15.65</u>	\$13.25
400 watts Mercury-Vapor	\$22.21	\$23.27	\$24.33 <u>31.09</u>	\$25.38
Sodium Vapor Lamps or equivalent Luminaire Fixture (no longer available for new installations)				
70/2300 watts/lumens	\$7.92	\$8.30	\$8.68 <u>9.86</u>	\$9.05
100/3700 watts/lumens	\$9.26	\$9.70	\$10.14 <u>11.83</u>	\$10.58
150/6300 watts/lumens	\$11.64	\$12.19	\$12.74 <u>15.28</u>	\$13.31
200/9500 watts/lumens	\$13.66	\$14.31	\$14.96 <u>18.34</u>	\$15.61
175W Metal Halide Lamps (no longer available for new installations)	\$12.65	\$13.25	\$13.85 <u>16.81</u>	\$14.46
LED Lights				
<u>105/9450 watts/lumens</u>			<u>\$17.25</u>	

DECORATIVE CHARGE

A monthly charge of \$2.69, in addition to the above rates, shall be made for each lamp mounted on a steel or decorative pole, mast, or fixture.

SPECIAL CONDITIONS

1. Service will normally be supplied to individually controlled lamps from the District's existing 120/240-volt (120/208-volt star in certain localities) single-phase overhead or underground distribution circuits. Service from 480-volt sources will be made available only when this type of service is deemed to be practical from the District's engineering standpoint, and the applicant pays the additional initial cost of a 480-volt supply.
2. Customer shall specify in writing the exact location and size of each lamp to be installed.
3. Lighting service will be supplied from dusk to dawn on an operating schedule of approximately 4,100 hours per year.
4. The charges, pursuant to the District's Line Extension Policy, to connect the light to the District's system shall be advanced to the District by the customer prior to installation of the facilities.
5. Street lights will be relocated or removed at the expenses of the customer.
6. A decorative pole is one of the following: Steel, Fiberglass, Aluminum or Concrete.

- 7. A decorative mast or fixture is any mast or fixture the District would not stock if not for the special request of the customer.

~~DROUGHT RELIEF SURCHARGE~~

~~To the charges computed under the above rate, including any adjustments, shall be added applicable Drought Relief surcharges pursuant to Rate Schedule No. 18, Drought Relief Surcharge.~~

TAX CLAUSE

To the charges computed under the above rate, including any adjustments, shall be added the applicable proportionate part of any taxes or governmental impositions which are, or may in the future be, assessed on the basis of gross revenues of the District and/or the price or revenue from the electric energy or service sold and/or the volume of energy generated or purchased for sale and/or sold hereunder. As of the date this rate was approved, two such assessments existed: (1) the specified per kWh tax established by the California Energy Commission; and, (2) A 2.85% of revenue "Public Benefit" ~~sur~~charge.

For the purpose of determining monthly energy consumption the size of the light in watts shall be multiplied by 341.

TERMS AND CONDITIONS

- 1. The District shall not be liable for any damages, direct, consequential, or any other, if this rate is terminated or the provisions thereof changed by action of the Board of the District or any regulatory agency, state or federal, or by action of any court.
- 2. The rates stated herein are subject to such changes as may be authorized by the Board of Directors of the District from time to time.

AVAILABILITY

Throughout the entire District service area where the facilities of the District are available of adequate capacity.

Date Effective: February 11, ~~2022~~2024
 Date Approved: ~~January 13, 2022~~February 8, 2024
 Resolution No.: ~~22-0224-01~~

Michael Rourke, President

AGRICULTURAL PUMPING SERVICE

APPLICABILITY

This schedule applies to single-phase and polyphase alternating current service solely for agricultural pumping that meets or exceeds 5 horse power. To qualify for this rate, the customer must submit a copy of the customer's IRS Form No. F (or its equivalent, or replacement), or provide other evidence that the pumping load is used to generate agricultural income.

This service is not available for resale, standby or auxiliary service, or service to any equipment, which will cause excessive voltage fluctuation.

MONTHLY RATE

EFFECTIVE DATE	SYSTEM ACCESS CHARGE	ENERGY CHARGE – kWh
2/11/2022	\$27.50	\$0.05866
2/11/2023	\$31.00	\$0.06089
2/11/2024	\$34.50 39.00	\$0.06312 .04796
2/11/2025	\$38.00	\$0.06536

DROUGHT RELIEF SURCHARGEWHOLESALE POWER CHARGE

To the charges computed under the above rate, including any adjustments, shall be added applicable ~~Drought Relief surcharges~~Wholesale Power charges pursuant to Rate Schedule No. 18, ~~Drought Relief Surcharge~~Wholesale Power Charge.

TAX CLAUSE

To the charges computed under the above rate, including any adjustments, will be added the applicable proportionate part of any taxes or governmental impositions which are, or may in the future be, assessed on the basis of gross revenues of the District and/or the price or revenue from the electric energy or service sold and/or the volume of energy generated or purchased for sale and/or sold hereunder. As of the date this rate was approved, two such assessments existed: (1) the specified per kWh tax established by the California Energy Commission; and (2) a 2.85% of revenue "Public Benefit" ~~surcharge~~ on total revenue from power sold.

GUARANTEED PAYMENTS

When a customer agrees pursuant to the District Line Extension Policy, to guarantee certain payments, such payments may supersede the rates established herein.

TERMS AND CONDITIONS

1. The District shall not be liable for any damages, direct, consequential, or any other, if this rate is terminated or the provisions thereof changed by action of the Board of the District or any regulatory agency, state or federal, or by action of any court.
2. The rates stated herein are subject to such changes as may be authorized by the Board of Directors of the District from time to time.

AVAILABILITY

Throughout the entire District service area where the facilities of the District are available of adequate capacity, and reasonably accessible to the customer service panel.

Date Effective: February 11, ~~2022~~2024
 Date Approved: ~~January 13, 2022~~February 8, 2024
~~Resolution-Ordinance~~ No.: ~~22-0224-01~~

 Michael Rourke, President

PUBLIC BENEFIT DISCOUNT

APPLICABILITY

This schedule is applicable to any customer who, at the District's sole discretion, qualifies as a local government, nonprofit corporation or association, special district, or school district. To qualify, the customer must be a commercial customer, and may be required to provide evidence that they are registered with the State of California as a nonprofit corporation, or as a nonprofit association, and provide a copy of their most recent IRS 501.C.3 form (or its equivalent). This rate is intended to partially meet the requirements of Article 8 of Assembly Bill 1890, which became law on September 24, 1996. As such, this rate is subject to change due to interpretation or application of the requirements of AB 1890.

RATES

A Public Benefit Discount, expressed as a percentage, will be applied to the rates and charges that would otherwise be due under the applicable District Rate Schedule, exclusive of:

- 1) The amounts collected under the Tax Clause; and
- 2) The amounts collected under the Outdoor Area Lighting Service, Rate Schedule No. 7;
- 3) The amounts collected under the Street and Highway Lighting, Rate Schedule No. 8;
- ~~4) The amounts collected under the Project Agreement No. 1, Rate Schedule No. 16;~~
- ~~5) 4) The amounts collected under the Drought Relief Surcharge, Wholesale Power Charge, Rate Schedule No. 18; and~~
- ~~6) 5) The amounts collected as the System Access Charge.~~

SPECIAL CONDITIONS

- 1. The amount will change each January 1, depending on:
 - a. The amount required to be spent by AB 1890 on all qualifying Public Benefit Programs;
 - b. The amount actually spent on all qualifying Public Benefit Programs;
 - c. The amount budgeted for other qualifying Public Benefits programs;
 - d. The estimated total charges to qualifying customers;
 - e. The District's projected total annual revenue.
- 2. The maximum discount allowed shall be twenty-five percent (25%). Any Public Benefit funds remaining as a result of the discount limit shall be spent on other qualifying Public Benefit Programs.
- 3. Each December, staff will present to the Board of Directors for their ratification the appropriate amount of the Public Benefit Discount.
- 4. The District shall not be liable for any damages, direct, consequential, or any other, if this discount is terminated or the provisions thereof changed by action of the Board of the District or any regulatory agency, state, or federal, or by action of any court.

AVAILABILITY

Throughout the entire District service area where the facilities of the District are available of adequate capacity, and reasonably accessible to the customer service panel.

Date Effective: ~~January 1, 2020~~ February 11, 2024
 Date Approved: ~~December 12, 2019~~ February 8, 2024
~~Resolution Ordinance~~ No.: ~~19-0724-01~~

Clarence W. Rose Michael Rourke, President

UNMETERED SERVICE

APPLICABILITY

This service is applicable to electric service where metering equipment is not installed. Usage must be at a fixed rate, or be subject to a flat rate contract. After January 1, 1998, this rate will only be available for new continuous usage rate services. New decorative, sign, or other night lighting services shall have metering equipment installed and be served under the applicable rate.

MONTHLY RATE

EFFECTIVE DATE	GEOGRAPHIC ZONE A		GEOGRAPHIC ZONE B	
	SYSTEM ACCESS CHARGE	ENERGY CHARGE – kWh	SYSTEM ACCESS CHARGE	ENERGY CHARGE - kWh
2/11/2022	\$41.25	\$0.12120	\$41.25	\$0.14003
2/11/2023	\$46.50	\$0.12433	\$46.50	\$0.13689
2/11/2024	\$51.75 <u>\$8.00</u>	\$0.12746 <u>\$1.132</u>	\$51.75 <u>\$8.00</u>	\$0.13375 <u>\$1.132</u>
2/11/2025	\$57.00	\$0.13060	\$57.00	\$0.13060

The monthly energy usage shall be calculated by multiplying the maximum nameplate load rating, in kWh, of the device being served by either:

- a. 548 hours for continuous usage service; or
- b. 333 hours for dusk to dawn service.

GEOGRAPHIC ZONES

Customers within the geographic boundaries of the District that existed on June 30, 1993, and in the geographic boundaries of the Hayfork P.U.D. that existed on June 30, 1993 are classified customers within the Geographic Zone A, all other customers are classified as within the Geographic Zone B. The geographic boundaries shall be determined by records kept by the County Clerk.

DROUGHT RELIEF SURCHARGE WHOLESAL POWER CHARGE

To the charges computed under the above rate, including any adjustments, shall be added applicable ~~Drought Relief surcharges~~Wholesale Power charges pursuant to Rate Schedule No. 18, ~~Drought Relief Surcharge.~~Wholesale Power Charge.

TAX CLAUSE

To the charges computed under the above rate, including any adjustments, shall be added the applicable proportionate part of any taxes or governmental impositions which are, or may in the future be, assessed on the basis of gross revenues of the District and/or the price or revenue from the electric energy or service sold and/or the volume of energy generated or purchased for sale and/or sold hereunder. As of the date this rate was approved, two such assessments existed: (1) the specified per kWh tax established by the California Energy Commission; and (2) a 2.85% of revenue "Public Benefit" ~~surcharge.~~ on total revenue from power sold.

TERMS AND CONDITIONS

1. The District shall not be liable for any damages, direct, consequential, or any other, if this rate is terminated or the provisions thereof changed by action of the Board of the District or any regulatory agency, state or federal, or by action of any court.
2. The rates stated herein are subject to such changes as may be authorized by the Board of Directors of the District from time to time.

AVAILABILITY

Throughout the entire District's service area where the facilities of the District are available of adequate capacity and reasonably accessible to the customer service panel.

Date Effective: February 11, ~~2022~~2024
Date Approved: ~~January 13, 2022~~February 8, 2024
~~Resolution-Ordinance~~ No.: ~~22-0224-01~~

Michael Rourke, President

RENEWABLE ELECTRIC GENERATING FACILITY NET METERING ~~AND~~ SOLAR POWER INCENTIVE

APPLICABILITY

This schedule is applicable to any single-phase and polyphase service metered by the District. This Rate Schedule is intended to meet the requirements of Sections 387.5 and 2827 and 2827.10 of the Public Utilities Code and Section 25782 of the Public Resources Code. ~~This incentive is to terminate on January 1, 2019.~~

SOLAR INSTALLATIONS INCENTIVE

~~Fifty cents (\$0.50) per installed Watt, declining to zero dollars (\$0) per installed Watt on January 1, 2016.~~

1. All components in the solar electric system shall be new and unused, and have not previously been placed in service in any other location or for any other application.
2. The solar electric system shall have a warranty of not less than ten years to protect against defects and undue degradation of electrical generation output.

ELIGIBILITY CRITERIA

1. The customer shall execute an Interconnection Agreement For Net Energy Metering From Renewable Electric Generating Facilities.
2. The renewable electric generating facility shall be of a type listed in paragraph (1) of subdivision (a) of Section 25741 of the Public Resources Code and shall be in full compliance with all applicable design, installation, and electrical output standards, regulations, codes and this Rate Schedule.
3. The renewable electric generating facility shall be intended primarily to offset part or all of the consumer's own electricity demand.
4. The renewable electric generating facility shall be located on the same premises of the end-use customer where the customer's own electricity demand is located.
5. The renewable electric generating facility shall be connected to the District's electrical distribution system.
6. The renewable electric generating facility shall have District meters in place to monitor and measure the system's performance and the quantity of electricity generated by the system.
7. The renewable electric generating facility shall be installed in conformance with the manufacturer's specifications and in compliance with all applicable electrical and building code standards.

TERMS AND CONDITIONS

1. Any reduction in greenhouse gas credits will accrue to the benefit of all District customers. The District shall retain the applicable credits for each renewable electric generating facility that is provided net metering benefits under this rate schedule.
2. The District may retain expert consultants to review and inspect the design and installation of any renewable electric generating facility, to be sure that the facility, currently or in the future, will:

- a. not impose unsafe conditions on the Districts system, to District employees, or other District customers.
- b. not introduce unacceptable harmonics or otherwise reduce the quality of power deliveries to other District customers.
- c. be in full compliance with all applicable design, installation, and electrical output standards, regulations, codes and this Rate Schedule.

The expert consultant may also review and determine the Installed Wattage of the facility.

The District's cost for such review and inspection, ~~excluding-including~~ time spent by District Staff, and the cost of providing meters in accordance with the Net Generating Interconnection Agreement (IA) will be deducted from the Solar Incentive is the responsibility of the Customer and must be paid in advance of the District installing the Net Meter.

3. The District shall not be liable for any damage caused to the customer's equipment as a direct or indirect result of the renewable electric generating facility.
4. The District shall not be liable for any damages, direct, consequential, or any other, if this rate is terminated or the provisions thereof changed by action of the Board of the District or any regulatory agency, state or federal, or by action of any court.
5. The rates stated herein are subject to such changes as may be authorized by the Board of Directors of the District from time to time. ~~However, the incentive rate, effective at the time an Interconnection Agreement for Net Metering from Solar Generating Facilities is fully executed, shall remain applicable for a period of 60 days from such execution, after which the then current incentive rate shall apply.~~
6. Net energy metering is available to customers on a first-come-first-served basis until the time that the total rated generating capacity used by customer-generators exceeds five percent of the District's aggregate customer peak demand.
7. Net energy metering customers shall not be exempt from the Public Benefit Charge imposed by the District pursuant to Public Utilities Code Section 385.

ENERGY PRODUCED (NET METERING)

Both the customer's electric consumption and the energy produced by the solar electric system shall be metered by ~~a separate meters~~meter, owned, maintained, and read by the District.

Should, during any billing month, the renewable electric generating facility generate more energy than the customer consumes, resulting in excess energy flowing into the District's system, the customer will be eligible to receive a monetary credit. Such credit shall be equal to the product of the energy charge, in the applicable Rate Schedule, times the net amount of energy that flowed into the District's system, during that billing month.

The monetary credit will be used to reduce amounts owed by the customer during subsequent billing months for any energy consumed that is greater than the energy generated by the renewable electric generating facility. Every year after the end of December the District will provide a refund to customer-generators that have so elected, any net-generation credit from the preceding year, which is based on the District's average avoided cost of power (Western's cost of power that is billed to the District) for that calendar year.

The District shall provide the customer with the net electricity consumption information on each monthly bill. The bill shall include an administrative charge of ~~\$40~~20.00 per billing month in addition to any flat charges or network access fees paid by all customers within the rate class to reduce cross subsidization between customers.

The foregoing is applicable only to the energy charge component of the applicable Rate Tariff.

All other applicable charges, regardless of the amount of energy produced by the renewable electric generating facility, shall fully apply as though the renewable electric generating facility did not exist.

DEFINITIONS

Watt – The average amount of energy produced over an interval of fifteen continuous minutes.

Installed Watt - Shall initially be set at 80% of the lesser of the nameplate output of the solar panels or the name plate output of the power conditioning equipment. If after installation the solar system output, measured by a District approved meter, is greater then the Installed Watt shall be increased to the metered amount. However, in no invent will the Solar Incentive be applied to an amount that is greater than, the lesser of the nameplate output of the solar panels or the name plate output of the power conditioning equipment.

AVAILABILITY

Throughout the entire District’s service area.

Date Effective:	February 12, 2015 <u>11, 2024</u>
Date Approved:	February 12, 2015 <u>08, 2024</u>
<u>Resolution Ordinance</u> No.:	<u>15-0224-01</u>

~~/s/ Kelli Gant~~

~~Kelli Gant~~Michael Rourke, President

DROUGHT RELIEF SURCHARGE/WHOLESALE POWER CHARGE

APPLICABILITY

This schedule is applicable to all customers and shall become effective on February 11, 2024, whenever the following condition occurs. This Surcharge shall become applicable only after the Department of Water Resources (<http://cdec.water.ca.gov/snow/bulletin120>) April Bulletin 120 reports that the then current Water Year is below average. Once applicable this Surcharge will continue until it is modified or repealed by the Board of Directors. Adjustments to the rate will occur automatically whenever the District's wholesale cost of power from the Western Area Power Administration changes. The charge will be calculated by dividing the total cost of power from the Western Area Power Administration by the estimated number of kilowatt hours sold annually to District customers. the next April when the Bulletin 120 report announces that the then current Water Year is above average, at which point the Surcharge will be suspended until it becomes applicable again. The Surcharge, if applicable, will begin with the May billing month and end, if applicable, with the April billing month.

RATES

A Drought Relief Surcharge/The Wholesale Power Charge shall be added to all customer monthly bills as follows:

1. Energy charge for any Rate Schedule that identifies the Drought Relief Surcharge/Wholesale Power Charge is applicable as defined above. \$0.017 per kWh
2. ~~Street and Area lights; Rate Schedules 7 and 8:~~

<u>Wattage or equivalent</u>	<u>70</u>	<u>100</u>	<u>150</u>	<u>175</u>	<u>189</u>	<u>200</u>	<u>295</u>	<u>400</u>
<u>Monthly Surcharge</u>	<u>\$1.18</u>	<u>\$1.69</u>	<u>\$2.54</u>	<u>\$2.96</u>	<u>\$3.20</u>	<u>\$3.38</u>	<u>\$5.00</u>	<u>\$6.76</u>

SPECIAL CONDITIONS

1. ~~The intent of the Surcharge/Wholesale Power Charge is to recover the additional cost that the District is charged by the Western Area Power Administration for wholesale electric power. due to reduced hydroelectric generation caused by a below average Water Year. The Board of Directors shall meet to determine if the Surcharge amount is appropriate and if not, adjust the Surcharge amount.~~

Date Effective: February 11, ~~2022~~2024
 Date Approved: ~~January 13, 2022~~February 8, 2024
Resolution/Ordinance No.: ~~22-0224-01~~

 Michael Rourke, President

**PRIMARY
STATE OF CALIFORNIA SERVICE**

APPLICABILITY

This schedule applies to single-phase and polyphase alternating current service for an agency of the State of California.

This service is not available for resale, standby or auxiliary service, or service to any equipment, which will cause excessive voltage fluctuation.

MONTHLY RATE

EFFECTIVE DATE	GEOGRAPHIC ZONE A		GEOGRAPHIC ZONE B	
	SYSTEM ACCESS CHARGE	ENERGY CHARGE – kWh	SYSTEM ACCESS CHARGE	ENERGY CHARGE - kWh
2/11/2022	\$41.25	\$0.09345	\$41.25	\$0.11393
2/11/2023	\$46.50	\$0.10040	\$46.50	\$0.11406
2/11/2024	\$51.7558.00	\$0.1073509690	\$51.7558.00	\$0.1141909690
2/11/2025	\$57.00	\$0.11430	\$57.00	\$0.11430

POWER FACTOR

If an electric load routinely falls below a power factor of 75% then the customer shall pay, in addition to the charges above, a power factor charge equal to the sum of the following:

1. \$10 per month, plus
2. the Energy charge above times a percent corresponding to the average power factor (computed from the average kW and the average kvar) as follows:

Power Factor	Percent Increase	Power Factor	Percent Increase	Power Factor	Percent Increase	Power Factor	Percent Increase
75%	5.3%	57%	12.1%	39%	25.0%	21%	60.2%
74%	5.6%	56%	12.6%	38%	26.1%	20%	64.0%
73%	5.9%	55%	13.1%	37%	27.2%	19%	68.2%
72%	6.2%	54%	13.6%	36%	28.4%	18%	72.9%
71%	6.5%	53%	14.2%	35%	29.7%	17%	78.1%
70%	6.9%	52%	14.8%	34%	31.1%	16%	84.0%
69%	7.2%	51%	15.4%	33%	32.5%	15%	90.7%
68%	7.5%	50%	16.0%	32%	34.0%	14%	98.3%
67%	7.9%	49%	16.7%	31%	35.6%	13%	107.1%
66%	8.2%	48%	17.3%	30%	37.3%	12%	117.3%
65%	8.6%	47%	18.0%	29%	39.2%	11%	129.5%
64%	9.0%	46%	18.8%	28%	41.1%	10%	144.0%
63%	9.4%	45%	19.6%	27%	43.3%	9%	161.8%
62%	9.8%	44%	20.4%	26%	45.5%	8%	184.0%
61%	10.2%	43%	21.2%	25%	48.0%	7%	212.6%
60%	10.7%	42%	22.1%	24%	50.7%	6%	250.7%
59%	11.1%	41%	23.0%	23%	53.6%	5%	304.0%
58%	11.6%	40%	24.0%	22%	56.7%		

Services subject to a Power Factor charge shall be required to pay the District's out-of-pocket costs to install and maintain the metering or to otherwise collect sufficient data on the amount of reactive power consumed to determine the amount of reactive power consumed.

If the reactive power consumed as a result of, and during the operation of, a generator delivering real power to the District's system then the reactive power will be free of charges from the District. In the event of such generator operation for a partial month, the District shall use historical averages to estimate the amount of reactive power consumed when the generator was not delivering real power to the District's system.

GEOGRAPHIC ZONES

Customers within the geographic boundaries of the District that existed on June 30, 1993, and in the geographic boundaries of the Hayfork Valley P.U.D. that existed on June 30, 1993 are classified customers within the Geographic Zone A, all other customers are classified as within Geographic Zone B. The geographic boundaries shall be determined by records kept by the County Clerk.

~~DROUGHT RELIEF SURCHARGE~~WHOLESALE POWER CHARGE

To the charges computed under the above rate, including any adjustments, shall be added applicable ~~Drought Relief Surcharges~~Wholesale Power Charge pursuant to Rate Schedule No. 18, ~~Drought Relief Surcharge~~Wholesale Power Charge.

TAX CLAUSE

To the charges computed under the above rate, including any adjustments, shall be added the applicable proportionate part of any taxes or governmental impositions which are, or may in the future be, assessed on the basis of gross revenues of the District and/or the price or revenue from the electric energy or service sold and/or the volume of energy generated or purchased for sale and/or sold hereunder. As of the date this rate was approved, two such assessments existed: (1) the specified per kWh tax established by the California Energy Commission, and (2) a 2.85% of revenue "Public Benefit" ~~surcharge on total revenue from power sold.~~

GUARANTEED PAYMENTS

When a customer agrees pursuant to the District Line Extension Policy, to guarantee certain payments, such payments may supersede the rates established herein.

TERMS AND CONDITIONS

1. The District shall not be liable for any damages, direct, consequential, or any other, if this rate is terminated or the provisions thereof changed by action of the Board of the District or any regulatory agency, state or federal, or by action of any court.
2. The rates stated herein are subject to such changes as may be authorized by the Board of Directors of the District from time to time.
3. Service under this Rate Schedule shall enjoy a one month delay in District policy in regards to the issuance of any otherwise applicable Delinquency Notice, Late Notice, or Disconnection Notice; and the levying of a Late Payment Penalty.

AVAILABILITY

Throughout the entire District service area where the facilities of the District are available of adequate capacity, and reasonably accessible to the customer service panel.

Date Effective: February 11, ~~2022~~2024
 Date Approved: ~~January 13, 2022~~February 8, 2024
~~Resolution~~Ordinance No.: ~~22-02~~24-01

 Michael Rourke, President

**PRIMARY
HIGH IMPACT LOAD SERVICE**

APPLICABILITY

This schedule applies to single-phase and polyphase alternating current service that:

1. Will require immediate and/or future infrastructure upgrades to the distribution circuit; and
2. Has a load factor that is greater than 0.7 and/or a projected diversity factor less than 1.5; and/or
3. Has a projected usage that would cause the distribution circuit to have a load factor greater than 0.75 and/or a projected diversity factor of less than 1.3; and
4. Any other electric service that is not applicable to another rate schedule.

This service is not available for resale, standby or auxiliary service, or service to any equipment, which will cause excessive voltage fluctuation. Trinity PUD has sole discretion in determining the applicability of this rate.

The owner of a service that has been reclassified to High Impact Load Service, Rate Schedule 20 due to usage higher than 9,999 kWh in any given month and/or falls into the criteria above may petition the District’s General Manager for reclassification back to Rate Schedule 1 and/or Rate Schedule 3 after twelve (12) consecutive months with usage below 10,000kWh. For the purpose of determining monthly usage all electric meters on a parcel shall have their energy usage aggregated and treated as a single meter. However, the System Access Charge shall apply to all meters separately.

MONTHLY RATE

EFFECTIVE DATE	GEOGRAPHIC ZONE A		GEOGRAPHIC ZONE B	
	SYSTEM ACCESS CHARGE	ENERGY CHARGE – kWh	SYSTEM ACCESS CHARGE	ENERGY CHARGE - kWh
2/11/2022	\$63.75	\$0.10183	\$63.75	\$0.11985
2/11/2023	\$82.50	\$0.11656	\$82.50	\$0.12857
2/11/2024	\$101.25 125.00	\$0.13129 12860	\$101.25 125.00	\$0.13729 12860
2/11/2025	\$120.00	\$0.14600	\$120.00	\$0.14600

GEOGRAPHIC ZONES

Customers within the geographic boundaries of the District that existed on June 30, 1993, and in the geographic boundaries of the Hayfork Valley P.U.D. that existed on June 30, 1993 are classified customers within the Geographic Zone A, all other customers are classified as within Geographic Zone B. The geographic boundaries shall be determined by records kept by the County Clerk.

~~DROUGHT RELIEF SURCHARGE~~WHOLESALE POWER CHARGE

To the charges computed under the above rate, including any adjustments, shall be added applicable ~~Drought Relief surcharges~~Wholesale Power charge pursuant to Rate Schedule No. 18, ~~Drought Relief Surcharge~~Wholesale Power Charge.

TAX CLAUSE

To the charges computed under the above rate, including any adjustments, shall be added the applicable proportionate part of any taxes or governmental impositions which are, or may in the future be, assessed on the basis of gross revenues of the District and/or the price or revenue from the electric energy or service sold and/or the volume of energy generated or purchased for sale and/or sold hereunder. As of the date this rate was approved, two such assessments existed: (1) the specified per kWh tax established by the California Energy Commission, and (2) a 2.85% of revenue “Public Benefit” surcharge, on total revenue from power sold.

GUARANTEED PAYMENTS

When a customer agrees pursuant to the District Line Extension Policy, to guarantee certain payments, such payments may supersede the rates established herein.

TERMS AND CONDITIONS

1. The District shall not be liable for any damages, direct, consequential, or any other, if this rate is terminated or the provisions thereof changed by action of the Board of the District or any regulatory agency, state or federal, or by action of any court.
2. The rates stated herein are subject to such changes as may be authorized by the Board of Directors of the District from time to time.

AVAILABILITY

Throughout the entire District service area where the facilities of the District are available of adequate capacity, and reasonably accessible to the customer service panel.

Date Effective: February 11, ~~2022~~2024
 Date Approved: ~~January 13, 2022~~February 8, 2024
~~Resolution-Ordinance~~ No.: 22-0224-01

Michael Rourke, President

TRINITY PUBLIC UTILITIES DISTRICT

RESOLUTION 24-01

RESOLUTION OF THE BOARD OF DIRECTORS
OF THE TRINITY PUBLIC UTILITIES DISTRICT RESCINDING CURRENT
MISCELLANEOUS SERVICE CHARGES AND ADOPTING NEW
MISCELLANEOUS SERVICE CHARGES

WHEREAS, the Trinity Public Utilities District Board of Directors has decided to change the current Schedule of Miscellaneous Service Charges.

NOW, THEREFORE, be it resolved that the Trinity Public Utilities District Board of Directors adopts the new Schedule of Miscellaneous Service Charges, Revision Number 13 attached hereto. All previous Miscellaneous Service Charges are hereby rescinded.

Passed and adopted by the Board of Directors of the Trinity Public Utilities District at a regular meeting held February 8, 2024, by the following vote:

Ayes:
Noes:
Absent:
Abstain:

Michael Rourke, President

Attest: _____
Andrew Johnson, Clerk

Approved as to Form: _____
James Underwood, Legal Counsel

CLERK'S CERTIFICATE

I, Andrew Johnson, Clerk of the Trinity Public Utilities District, hereby certify that the foregoing is a full and correct copy of Resolution 24-01, duly adopted at a regular meeting of the Board of Directors of said District, duly held at the noticed meeting place on February 8, 2024, at which all of the members of the Board of Directors had due notice and at which a majority thereof were present; and that at said meeting, said Resolution was adopted by the following vote:

Ayes:
Noes:
Absent:
Abstain:

I further certify that I have carefully compared the same with the original minutes of said meeting on file and of record in my office, that the foregoing Resolution is a full, true and correct copy of the original Resolution adopted at said meeting and entered in said minutes; and that said Resolution has not been amended, modified, or rescinded since the date of its adoption, and the same is in full force and effect.

Witness my hand at the Trinity Public Utilities District, this 8th day of February, 2024.

Andrew Johnson,
Clerk of the Trinity
Public Utilities District

DRAFT

Trinity Public Utilities District
Schedule of Miscellaneous Service Charges

Connection or Reconnection Fees:

If multiple connections are requested at the same time for a single panel, then each additional connection shall be charged \$35.00 per meter set.

	<u>Meter Set</u>
If Connection or Reconnection is requested to be made:	
Within three business days or meter has a remote collar	\$ 35.00
Next business day	150.00
Same business day, any time after business hours or at transformer (not available for meters with a remote collar)	300.00

If a customer requests a disconnection and if either the account or location is closed and later requests a reconnection the old account or location will be reopened and in addition to any applicable charges above the customer shall be charged ~~\$39.00~~ the System Access Charge for the applicable Rate Schedule for each month the account or location was closed up to a maximum of ~~\$702.00~~ 18 months. In which case a "month" will be defined as each billing date that occurred while the account or location was closed.

Deposit:

(2-month average consumption or minimum deposit, whichever is greater.)

Residential Minimum Deposit	\$150.00
Commercial Minimum Deposit	\$200.00

Remote Disconnect	\$ 35.00
Prepay Disconnect	\$ 15.00
Damaged Meter	\$160.00 – \$280.00 <u>replacement cost</u>
Meter Test	\$ 35.00
Returned Payment	\$ 25.00
Late Payment	(1.5%) or minimum of \$10.00
48-hour Shut-Off Notice	\$ 50.00
Counter Collection Fee	\$35.00
Credit Card Convenience Fee	On-Line \$ 0.00
Credit Card Convenience Fee	\$ 6.00
with assistance from District Staff	
<u>Copies (per 8 ½ x 11 page)</u>	<u>\$1.00</u>

Date Effective: ~~June 13, 2019~~ February 8, 2024
Date Approved: ~~June 13, 2019~~ February 8, 2024
Resolution No.: ~~19-0224-01~~

~~Glarence W. Rose~~ Michael Rourke,
President